



REVIEW

Invasive pulmonary aspergillosis in patients with chronic obstructive pulmonary disease

P. Bulpa*, A. Dive* and Y. Sibille#

ABSTRACT: *Aspergillus* spp. cultured in specimens from the airways of chronic obstructive pulmonary disease (COPD) patients are frequently considered as a contaminant. However, growing evidence suggests that severe COPD patients are at higher risk of developing invasive pulmonary aspergillosis (IPA), although IPA incidence in this population is poorly documented. Some data report that COPD is the underlying disease in 1% of patients with IPA.

Definitive diagnosis of IPA in COPD patients is often difficult as tissue samples are rarely obtained before death. Diagnosis is therefore usually based on a combination of clinical features, radiological findings (mostly thoracic computed tomography scans), microbiological results and, sometimes, serological information.

Of 56 patients with IPA reported in the literature, 43 (77%) were receiving corticosteroids on admission to hospital. Breathlessness was always a feature of disease and excess wheezing was present in 79% of patients. Fever ($>38^{\circ}\text{C}$) was present in only 38.5%. Chest pain and haemoptysis were uncommon. Six out of 33 (18%) patients had tracheobronchitis observed during bronchoscopy. The median delay between symptoms and diagnosis was 8.5 days. The mortality rate was high: 53 out of 56 (95%) patients died despite invasive ventilation and antifungal treatment in 43 (77%) of them.

In chronic obstructive pulmonary disease patients, invasive pulmonary aspergillosis currently carries a very poor prognosis. Outcome could perhaps be improved by more rapid diagnosis and prompt therapy with voriconazole.

KEYWORDS: Aspergillosis, chronic obstructive pulmonary disease, fungal infection, infection in chronic obstructive pulmonary disease, invasive pulmonary aspergillosis

The fungus *Aspergillus* can be found worldwide, with preferential tropism for humid soil. Although numerous species have been reported, few are pathogenic and *Aspergillus fumigatus* accounts for ~90% of human infections. Due to the high sporulating capacity of *Aspergillus*, normal air contains a concentration ranging 1–100 spores·m⁻³ [1, 2]. As the conidia released in the air after *Aspergillus* sporulation are small enough (2–3 µm diameter) to reach the alveoli, the lung is the main organ to be affected by *Aspergillus*. The mycological characteristics of *A. fumigatus* have been extensively reviewed and, therefore, will not be discussed in the present review [2–4].

Although *Aspergillus* spp. cause various diseases in humans, such as allergic bronchopulmonary aspergillosis and aspergilloma, the present

review will focus only on invasive pulmonary aspergillosis (IPA). IPA is well known to account for a large number of mortalities due to fungi in haematological and solid-organ transplant patients [5]. According to recent autopsy series, its incidence has grown over the last 20 yrs [6–8]; this is probably related to the increasing use of immunosuppressive and corticosteroid therapies in this patient population [9, 10].

More recently, several authors have reported the occurrence of IPA in chronic obstructive pulmonary disease (COPD) patients, most of whom, but not all, were receiving steroid treatment, with a very high mortality rate [11–16]. An early diagnosis therefore seems crucial to improve prognosis [17, 18]. Even if *Aspergillus* spp. colonise the airways without generating an infection [19, 20], it is critical to recognise at an

AFFILIATIONS

Depts of *Intensive Care and #Pneumology, Mont-Godinne University Hospital, Université Catholique de Louvain, Yvoir, Belgium.

CORRESPONDENCE

P. Bulpa
Intensive Care Unit
Mont-Godinne University Hospital
Université Catholique de Louvain
5530 Yvoir
Belgium
Fax: 32 81423862
E-mail: pierre.bulpa@rean.ucl.ac.be

Received:

May 09 2006

Accepted after revision:

May 25 2007

STATEMENT OF INTEREST

None declared.

early stage the possibility of IPA in COPD, in particular in severe (Global Initiative for Chronic Obstructive Lung Disease (GOLD) stage IV) steroid-dependent patients. The present review addresses the epidemiology and pathophysiology of IPA in COPD patients. It further discusses the early clinical signs observed in these patients, as well as the available diagnostic procedures, in order to facilitate rapid recognition and appropriate treatment.

The following definitions are used in the subsequent text.

COPD “is a disease state characterised by airflow limitation that is not fully reversible.” This definition refers to the National Heart, Lung, and Blood Institute and the World Health Organization (NHLBI/WHO) workshop report [21].

GOLD classification refers to the definitions described in the NHLBI/WHO workshop report [22].

IPA is characterised by lung parenchyma invasion and necrosis due to *Aspergillus* spp.

Subacute IPA represents direct invasion of lung parenchyma by hyphal elements but with a slowly progressive cavitary lung disease.

Chronic pulmonary aspergillosis shows radiological signs of tissue destruction, but without evidence of hyphal invasion, with microbiological markers of *Aspergillus* infection.

The term tracheobronchitis is used when *Aspergillus* organisms invade the tracheobronchial tree. Subclassification exists from *Aspergillus* tracheobronchitis, with inflammation of the mucosa without invasion and with secretions containing *Aspergillus* spp., to more invasive bronchial aspergillosis, such as pseudomembranous tracheobronchial aspergillosis (consisting of necrosis and sloughing of the epithelium and pseudomembrane resulting from necrotic fragments and hyphal elements) and ulcerative tracheobronchial aspergillosis (manifesting as endobronchial plaque(s), nodule(s), or area(s) of ulceration and necrosis). Further description of the different definitions of disease due to *Aspergillus* can be found in HOPE *et al.* [23].

EPIDEMIOLOGY

To date, the frequency of IPA in COPD patients has been poorly documented. Assessing the incidence of IPA in this population is not easy due to the lack of a consistent case definition and the absence of infection surveillance measures. Moreover, colonisation by *Aspergillus* spp. is often difficult to distinguish from IPA, particularly at an early stage. However, there is growing evidence to suggest that COPD patients are at risk of IPA. In a review of 50 studies, COPD was the underlying condition in 26 out of 1,941 (1.3%) patients with aspergillosis [24]. In one large study, 9% of 595 patients with invasive aspergillosis (IA) suffered from pulmonary disease, without distinguishing among respiratory disorders [25]. RODRIGUES *et al.* [26] reported that COPD patients contribute to 1% of all cases of IA in their institution.

Steroids are believed to play a role in the emergence of IA, and some authors have investigated the correlation between the daily dose of corticosteroids and the probability of developing IA. In a renal transplant population, an average dose of

$\geq 1.25 \text{ mg}\cdot\text{kg}^{-1}\cdot\text{day}^{-1}$ of prednisone was the best predictor of subsequent IA [27]. Moreover, in haematological patients treated by peripheral blood or bone marrow transplantation, dosages $\geq 1 \text{ mg}\cdot\text{kg}^{-1}\cdot\text{day}^{-1}$ prednisone during ≥ 21 days were associated with a significantly greater risk of developing IA [28]. When all the data from the literature are pooled, $>20 \text{ mg}$ prednisone per day or a cumulative dose of $>700 \text{ mg}$ was associated with an increased risk of infectious complications [29].

Although precise dosages or durations of corticotherapy cannot be extrapolated from the literature, data support the fact that COPD patients are at risk for IPA when they have received high doses of corticosteroids or when steroids have been administered for a long time [11–13, 30]. Recently, some reports have suggested that high doses of inhaled corticosteroids may also be a risk factor for IPA [31–33]. Explanations as to how steroids may promote IPA are discussed later (see Pathophysiology section).

Despite the close relationship between steroids and IPA in COPD patients, it has been reported that some COPD patients may develop IPA without exposure to steroids [34]. Moreover, it has been reported that some infections, in particular viral infection, such as influenza [35, 36] or cytomegalovirus [9], may precede IPA, suggesting a role in causation [37].

IPA DEFINITIONS

Until recently, no standardised definition of IPA was available. Following the European Organisation for Research and Treatment of Cancer/Invasive Fungal Infections Cooperative Group consensus conference, common definitions for proven, probable and possible IPA were published for the highly susceptible population of immunocompromised patients with cancer and recipients of haematopoietic stem cell transplants [38].

In contrast, diagnostic criteria used in the literature so far for IPA in COPD patients are variable. Therefore, the present authors propose IPA definitions in that population of patients (table 1) in an attempt to standardise definitions, and based on the published information [12, 13, 34, 36–54], which are summarised in table 2.

PATHOPHYSIOLOGY

Aspergillus spp. is an airborne pathogen and its spores are small enough (2–3 μm) to reach lung parenchyma *via* the airways. The majority of *Aspergillus* conidia are probably excluded from the lungs by the ciliary action of the bronchial epithelium. However, in COPD patients, ciliary activity is often impaired by tobacco smoke and multiple episodes of infection, as well as repeated epithelial damage. The impairment of the defence mechanisms of the airways facilitates the binding of conidia to the epithelial layer [3]. Consequently, *Aspergillus* spp. first invade the bronchial mucosa, then the adjacent pulmonary parenchyma, and finally the vasculature inducing secondary pulmonary infarction.

The second line of host defence is the phagocytic system [55]; it comprises the alveolar macrophages (AM) that play a prominent role in destroying the *A. fumigatus* conidia, and the neutrophils that kill hyphae and germinating spores [56–59]. Other immune cells, such as natural killer lymphocytes [60], and the innate pulmonary host defences also play a role in protecting individuals against IA [61, 62].

TABLE 1 Definitions of invasive pulmonary aspergillosis (IPA) in chronic obstructive pulmonary disease (COPD) patients

Proven IPA	Histopathological or cytopathological examination, from needle aspiration or biopsy specimen obtained from any pulmonary lesion present for <3 months, showing hyphae consistent with <i>Aspergillus</i> and evidence of associated tissue damage, if accompanied by any one of the following: 1) Positive culture of <i>Aspergillus</i> spp. from any LRT sample. 2) Positive serum antibody/antigen test for <i>A. fumigatus</i> (including precipitins). 3) Confirmation that the hyphae observed are those of <i>Aspergillus</i> by a direct molecular, immunological method and/or culture.
Probable IPA	As for proven IPA but without confirmation that <i>Aspergillus</i> is responsible (points 1, 2 and 3 are not present or tested). OR COPD patient, usually treated with steroids and severe according to GOLD (stage III or IV), with recent exacerbation of dyspnoea [#] , suggestive chest imaging [†] (radiograph or CT scan; <3 months [‡]) and one of the following: 1) Positive culture [§] and/or microscopy for <i>Aspergillus</i> from LRT. 2) Positive serum antibody test for <i>A. fumigatus</i> (including precipitins). 3) Two consecutive positive serum galactomannan tests.
Possible IPA	COPD patient, usually treated by steroids and severe according to GOLD (stage III or IV), with recent exacerbation of dyspnoea [#] , suggestive chest imaging [†] (radiograph or CT scan; <3 months [‡]), but without positive <i>Aspergillus</i> culture or microscopy from LRT or serology.
Colonisation	COPD patient with positive <i>Aspergillus</i> culture from LRT <i>without</i> exacerbation of dyspnoea, bronchospasm or new pulmonary infiltrate.

Data from references [23] and [38]. LRT: lower respiratory tract; *A. fumigatus*: *Aspergillus fumigatus*; GOLD: Global Initiative for Chronic Obstructive Lung Disease; CT: computed tomography. [#]: Exacerbation of dyspnoea and/or bronchospasm resistant to appropriate treatment including antibiotics; [†]: pulmonary lesion(s) unresponsive to appropriate antibiotics (refers to dose, route, spectrum and activity against cultured bacteria); [‡]: pulmonary lesions, especially cavitary, present for >3 months are better classified as chronic pulmonary aspergillosis (see text), unless direct tissue invasion is demonstrated; [§]: standard or sabouraud culture, or molecular detection test when licensed.

Mechanisms and sequence of the conidia destruction by AM have been extensively investigated, and include the following four steps. 1) Phagocytosis of conidia (a 2-h process), 2) swelling of conidia, followed by 3) killing of *Aspergillus*, beginning only 6 h after AM internalisation, and then 4) eradication of conidia, involving production of reactive oxidant intermediates (ROI) [63]. Neutrophils kill *Aspergillus* after adhesion to the fungal surface and production of ROI, as well as secretion of proteolytic enzymes from granules [2].

Steroids enhance the growth of some *Aspergillus* (especially *A. fumigatus*) [64] and decrease AM antifungal activity [65, 66] by inhibiting ROI production and, therefore, favour the emergence of IPA [63]. In addition, neutrophils are also inhibited by corticosteroids; this impairment can be prevented by granulocyte colony-stimulating factor and interferon (IFN)- γ [58, 67]. Furthermore, steroids suppress T-helper cell type 1 cytokine production, as well as enhancing Th2 cytokines, diminishing the host response against *Aspergillus* [68].

Histological studies compared IPA lesions in steroid-treated and neutropenic animals. In the former, the immune response is characterised by an important influx of neutrophils into the lung parenchyma and interleukin-10 production [59]; histological analyses demonstrate large foci of pneumonia, exudative bronchiolitis with bronchial and alveolar destructions, and haemorrhagic necrosis with neutrophil infiltration. In contrast, only a few *Aspergillus* are observed and are mostly in their nongerminated form when present [59, 69]. Thus, in comparison with neutropenic animals, steroid-treated animals seem to die from an excessive host response rather than from a fungal invasion. As pneumonia is the main lesion encountered during histological examinations, this could explain why, on chest radiographs, nonspecific consolidation is more frequently

observed than multiple nodules in COPD patients undergoing steroid treatment (table 3).

Furthermore, in autopsy reports from COPD patients, disseminated aspergillosis is not a predominant feature, suggesting that haematological spread is rare (table 4). These findings are in accordance with results observed in animal models of IPA, where corticosteroid-treated animals exhibit a small index of extrapulmonary invasion compared with the chemotherapy-treated animals [59, 69].

Not only oral but also inhaled steroids might promote IPA in COPD patients. High doses of inhaled steroids therefore have potential systemic effects and could depress the adrenal function [70]. Although still debated, the use of inhaled steroids in COPD has been supported by preliminary results [71]. If these results are confirmed, the beneficial effects of widespread use of inhaled steroids in these patients, particularly the most severe, must be weighed against the risks of systemic side-effects (especially the effect on immunity).

Another concept could explain why some patients without the common risks of immunodepression contract IPA. In patients suffering from sepsis, the immune response is biphasic. The initial hyperinflammatory phase is followed by an anti-inflammatory response. When the latter reaction is excessive, it may lead to an immunoparalysis, also known as compensatory anti-inflammatory response syndrome. Consequently, the patient should be considered as temporarily immunocompromised and may be at risk of developing opportunistic infections, such as IPA [72].

CLINICAL FEATURES OF IPA IN COPD

The main clinical sign in COPD patients with IPA is a nonspecific antibiotic-resistant pneumonia associated with exacerbated dyspnoea. Patients' characteristics and clinical

TABLE 2 Characteristics of the patient population

Total number of patients	56
Sex	
Male	42 (75)
Female	14 (25)
Age yrs	
Mean \pm SD	65.5 \pm 9.3
Median (IQR)	66 (57–73)
Steroid treatment	
At admission	43
Systemic use	40
Inhaled only	3
In hospital (systemic use)	49
None	2
NA	5
Clinical signs (total patients available)	
Antibiotic resistant pneumonia	53 (56)
Dyspnoea exacerbation	48 (48)
Wheezing increase	22 (28)
Fever $>38^{\circ}\text{C}$	15 (39)
Haemoptysis	5 (12)
Parietal pain	4
Tracheobronchitis during bronchoscopy	6 (33)
Duration between symptoms and diagnosis days	
Mean \pm SD	12.5 \pm 11.3
Median (IQR)	8.5 (6–16.5)
Ventilation	
Invasive	43
Noninvasive ventilation	1
None	10
NA	2
Total leukocytes	
<12000	10
>12000	30
NA	16
Outcome[†]	
Death	53 (95)
Survival	3 (5)

Data are presented as n or n (%), unless otherwise stated. Data from [12, 13, 34, 36, 37, 39–54]. IQR: interquartile range; NA: not available. [†]: A total of 43 patients received treatment.

features reported in various studies in the literature are summarised in table 2 (only studies with sufficient data are included in this analysis). At the time of hospital admission, 43 patients (77%) were treated with steroids, including three receiving only inhaled forms of steroids. When considering the hospital stay, corticosteroids were administered in 96% of patients (49 out of 51). Multiple episodes of breathlessness are characteristic of the infection, and these exacerbations often occur after initial improvement of the respiratory symptoms [12, 30]. A significant bronchospastic component is documented in 79% of patients when reported. As described in the literature [73–76], fever is present in only 38.5% of patients (15 out of 39), contrasting with the findings in haematological patients where fever is the most common sign (87%) [74]. High-dose corticotherapy could account for the absence of

TABLE 3 Number of patients[#] with radiological signs

Chest radiographs	
Nonspecific consolidation	36
Specific images	10
Nodules	3
Cavitation	3
Wedge consolidation	3
Round consolidation	1
No infiltrate	2
NA	8
Chest CT scan	
Contributive	11
Halo sign	1
Nodule + cavitation	2
No description	8
Noncontributive	5
Not done	40

Data from [12, 13, 34, 36, 37, 39–54]. NA: not available; CT: computed tomography. [#]: total n=56.

fever. Moreover, again in contrast to symptoms associated with IA in haematological patients, chest pain and haemoptysis were rarely described in COPD patients. Tracheobronchitis was observed in six out of 33 patients who underwent bronchoscopy (table 2).

The onset of symptoms occurred with a median of 8.5 days before IPA diagnosis (table 2). During hospitalisation, invasive ventilation was required in 43 patients. This high incidence could be due to the long delay between the beginning of the disease and diagnosis.

Laboratory results revealed an elevated white blood cell count $>12,000$ cells·mL⁻¹ in 30 out of 40 patients (table 2). Inconsistently, other parameters, such as C-reactive protein, fibrinogen and lactate dehydrogenase, may also increase. Thrombocytopenia ($<100,000$ platelets·mm⁻³) was frequently observed in the late course [12].

Therefore, in severe steroid-dependent COPD patients, the presence of a dyspnoea exacerbation and poor clinical status, despite the use of broad-spectrum antibiotics and high doses of steroids, is highly suggestive of IPA, especially when a recent pulmonary infiltrate appears on chest radiograph and/or when *Aspergillus* species is retrieved in the sputum. In the case of a high-probability, but not confirmed, IPA, a diagnostic procedure must be performed to confirm the presence of the disease and treatment should be strongly considered.

DIAGNOSTIC PROCEDURES

Sputum

Although COPD patients may be colonised with *Aspergillus* spp., studies to ascertain this finding are scarce and, consequently, further investigations are needed to evaluate the true incidence of airways colonisation in this patient population [19, 20, 77, 78]. Nevertheless, the presence of *Aspergillus* spp. in the sputum must not be trivialised, especially in cases of antibiotic-resistant pneumonia.

TABLE 4 Diagnostic procedures

Positive cultures	
Sputum	19
Endotracheal aspirate	29
Bronchoalveolar lavage	12
Protected brush specimen	6
Pleural fluid	1
Lesion brushing	1
Bronchial washing	1
Antigenaemia[#]	12 out of 25
Positive Aspergillus antibodies	2
Positive biopsy	
Transbronchial lung biopsy	6
Open lung biopsy	1
Bronchial	2
Not determined	1
Autopsy (30 patients)	
Invasive pulmonary aspergillosis	24
Disseminated aspergillosis	6
Pathogens	
Fungus	
<i>A. fumigatus</i>	43
<i>A. niger</i>	2
<i>Aspergillus</i> spp.	2
<i>A. fumigatus</i> + <i>A. flavus</i>	3
<i>A. flavus</i>	1
NA	5
Other pathogens reported	36

Data from [12, 13, 15, 34, 36, 37, 39–54]. A.: *Aspergillus*; NA: not available.

[#]: Reported in reference [15] only.

Since mucus hypersecretion is a hallmark in COPD patients, sputum examination is often available. Moreover, its production is usually increased in IPA. Direct examination of the sputum for *Aspergillus* spp. can be rapidly performed and its positivity reaches 48% in case of IPA [79]. This yield may be increased up to 88% by the use of fluorescence techniques [80]. Although *Aspergillus* could grow on common culture medium, the *Aspergillus* growth is better on specific fungal medium. Positive sputum culture for *Aspergillus* is not diagnostic *per se* of IPA but should raise the suspicion of infection when the patient, especially when on steroid treatment, does not respond to antibiotics. Repeatedly positive cultures are even more suggestive of infection [81–83]. *Aspergillus* spp. is often retrieved with other pathogens (table 4) and, therefore, is then falsely considered as a contaminant. Although FISHER *et al.* [84] demonstrated the poor utility of respiratory cultures for IPA diagnosis in a population where >85% patients were suffering from haematological disease, these results were not confirmed by others [15, 20, 81, 85]. By contrast, in another study [86], *Aspergillus* spp. were isolated in 477 patients with “underlying pulmonary disease” (without other specification); among these, IA was diagnosed in 45 patients.

It remains unclear why some patients are only colonised by *Aspergillus* while others develop IPA without positive

sputum. Colonisation may correspond to a temporary passage of *Aspergillus* in the tracheobronchial tree, a long-term benign carriage, or the sign preceding invasive disease (as the incubation period before IPA is unknown) [23]. In contrast, the absence of positive sputum culture during IPA may be due to the low sensitivity of the diagnostic method [79], the presence of only few *Aspergillus* and mostly in their nongerminated form in the lesions [59, 69], or the tendency of *Aspergillus* to invade the vessels and to induce lung infarction [3]. Finally, as COPD definitions vary between reports [87], comparisons between studies are difficult and therefore no conclusions can be drawn.

Serology

The current galactomannan (GM) antigen test (ELISA test, Platelia® *Aspergillus*; Sanofi Diagnostics Pasteur, Marnes-La-Coquette, France) has sensitivity in the range of 1 ng·mL⁻¹ [88]. The ELISA test was used particularly in haematological malignancies, in which it demonstrated a benefit as the diagnosis could be achieved before the appearance of clinical signs [75, 89]. Thus, antigenaemia preceded fever, positive chest radiograph, high-resolution pulmonary computed tomography (CT) scan, and the first positive culture results by a median of 3.5, 8, 6 and 9 days, respectively [75]. To obtain such results, blood samples must be taken at least twice per week and the optical density index set to 1. However, these results were not confirmed by others [90–92], and some authors even reported sensitivity as low as 29.4% [93]. In a multicentre study, sensitivity and specificity were found to be 50 and 97%, respectively, and only one-third of the patients had a positive antigen response before IPA diagnosis on CT scan [74]. Another group reported that although the sensitivity was 82.5% in 40 bone marrow-transplant recipients with proven or probable IPA, the ELISA test was also positive in 31 of 169 patients without any sign of infection [94]. These discrepancies are probably due to the number of tests performed per week, the definition of IPA used (sometimes with the inclusion of “possible” IPA) and the optical density index cut-off chosen [75, 89, 90, 93–98]. There are other explanations that have been reviewed recently [99].

More recently, antigenaemia was tested in critically ill COPD patients with suspected IPA. Among 25 patients tested, 12 were positive (48%); however, no firm conclusions could be drawn due to the small sample size, the retrospective design of the study, the lack of a systematic policy of sampling and the absence of a search for confounding factors [15].

Interestingly, an increase in antigenaemia over a baseline value may be even more of a discriminant than a single value above the normal level. Indeed, in allogeneic stem cell-transplant recipients, BOUTBOUL *et al.* [100] demonstrated that a raise in antigenaemia of 1.0 over the baseline value during the first week of observation was associated with progressive disease (sensitivity and specificity of 44 and 87%, respectively, and a positive predictive value of 94%). As the pulmonary lesions caused by *Aspergillus* spp. usually increase on CT scan up to 2 weeks after diagnosis [101], even on effective treatment, it is difficult to conclude that the treatment fails on the sole argument of imaging. Thus, a rise in antigenaemia provides an argument for unsuccessful treatment and, hence, 1 week could be gained for changing the therapy.

The Platelia® test has several limitations. First, the main interest of an earlier diagnosis is to improve survival rate by enabling prompt and appropriate treatment to be initiated. However, despite interesting results, no prospective study has shown a mortality reduction by using the antigen test. Secondly, false-positive results have been reported in patients receiving piperacillin/tazobactam or amoxicillin/clavulanate [102–105]. Therefore, in patients treated with these antibiotics, antifungal therapy must be reconsidered if the only clues to support IPA diagnosis are repeatedly positive GM Platelia® tests. Thirdly, cross-reactions have been described with other fungi, bacteria, cyclophosphamide and food [103, 106–108]. Finally, it is unknown whether the results observed in haematological malignancies could be extrapolated to patients with other underlying diseases, such as COPD.

In addition to serological tests, other blood analyses are under development, including PCR tests and dosage of plasma concentration of the β -D-glucan. Preliminary results suggest that PCR has a good sensitivity and specificity [109–111]. However, there are no standardised methods, definitions of IPA vary between studies and caution is needed because plasma products could inhibit PCR testing [112]. The determination of plasma concentration of the β -D-glucan, a component of the fungal cell wall, does not appear to be superior to GM blood tests [113, 114].

Finally, as the antibody response is often weak in patients on long-term steroid therapy, the usefulness of antibodies against *Aspergillus* in IPA may be less sensitive than in immunocompetent patients. Moreover, the course of acute IPA is too fast to elicit an antibody response. In contrast, this is an extremely useful technique in patients with chronic pulmonary aspergillosis. Patients with COPD have a relatively normal immune system compared with neutropenic or bone marrow-transplant patients and are therefore likely to generate antibodies. While this area clearly needs substantial additional work, the presence of antibodies against *Aspergillus* and particularly seroconversion in the right clinical context with or without the presence of *Aspergillus* in sputum, might contribute to making a diagnosis of IPA in this type of patient [115]. Further information on this topic appears in a recent review of laboratory diagnosis of IA [116].

Radiology

Chest radiographs may be normal in the early stages of IPA. When present, multiple radiological signs have been described as being associated with IPA, such as consolidation (figs 1 and 2), nodules (fig. 2), the “halo sign” (fig. 3; better seen on thoracic CT scans) and the “air-crescent sign” (fig. 2). The latter two signs are almost pathognomonic of IPA in neutropenic haematological patients. The halo sign corresponds to a low attenuation surrounding a mass or nodule [117, 118], and the air-crescent sign is related to the contraction of infarcted lung tissue delineated by an air-filled space [118]. Although these signs are well described during neutropenia, it seems they are less frequently observed in COPD and solid organ-transplant patients [119, 120], where nonspecific consolidations are seen more frequently than the specific features mentioned in table 3. The excessive host response (see Pathophysiology section), the lung parenchyma changes secondary to the underlying disease or the delay before the

diagnosis, as reported in haematological patients [101], may explain why radiological findings are less specific in COPD patients. CAILLOT *et al.* [18] showed that survival can be improved when a thoracic CT scan is performed at the beginning of the disease, because it is far more sensitive than standard chest radiographs for detecting early lesions. In another study, thoracic CT scan abnormalities preceded, respectively, chest radiograph by 4.7 days, latex agglutination by 7.1 days and β -D-glucan measurements by 11.5 days [113].

An important issue remains: to exclude a cancer lesion when a nodule is discovered on chest imaging. To facilitate the correct diagnosis, it may be useful to compare present chest imaging with previous chest imaging (if available) and to use common criteria for cancer, such as the presence of irregular and spicular borders. The physician in charge must also consider other potential infectious and noninfectious processes as part of the differential diagnosis.

Fibreoptic bronchoscopy

When no sputum is available or contributive, material for culture should be obtained by fibreoptic bronchoscope (endotracheal aspirate, bronchoalveolar lavage (BAL), or bronchial washings or brushings). The yield of cultures has ranged 46–77% [73, 74, 79, 82, 85], while lower yields have been reported when patients were receiving high doses of antifungals [121]. BAL was more often positive in case of prolonged pneumonia or extensive pulmonary lesions. BROWN *et al.* [122] suggested that the positivity of BAL depends on the type of IPA: 20% in the angioinvasive form and 80% in the airway invasive form. Interestingly, cytological examination seems to be more often positive than cultures [79, 123].

In addition, antigen or PCR tests can be carried out on BAL fluid but standardisation is lacking. In one study performed in haematological patients using a latex agglutination test, sensitivity and specificity were 67% and 89%, respectively [74]. Although the ELISA antigen test on BAL fluid is feasible and reliable, the ELISA test on serum is probably more useful due to the repeatability of the method and the possibility of earlier diagnosis. BAL is only performed when pulmonary infiltrates are observed on chest imaging, while serum ELISA can be carried out before lung infiltrates are visible [124]. Although PCR on BAL fluid demonstrated poor specificity and standardisation, with 23% false-positive results [125, 126], other studies demonstrated a higher sensitivity and specificity, up to 100 and 100%, respectively [127–133]. Furthermore, PCR may be too sensitive, so that the difference between colonisation and infection can often be difficult to establish [134].

BAL-positive microscopy for *Aspergillus* is highly suspicious of active disease, although it is unable to definitively differentiate between colonisation and infection. While definitive confirmation of infection requires biopsy, immediate initiation of antifungals should be considered. During flexible bronchoscopy examination, some mucosal lesions might be present and thus biopsies can be obtained (fig 1). The yield of such biopsies has been reported to be as high as 47% in patients with proven or probable IPA [135, 136]. Furthermore, transbronchial lung biopsies can be performed (fig. 4) but the yield is ~25% [79, 135]. Unfortunately, despite its usefulness, performance of flexible bronchoscopy in COPD patients is

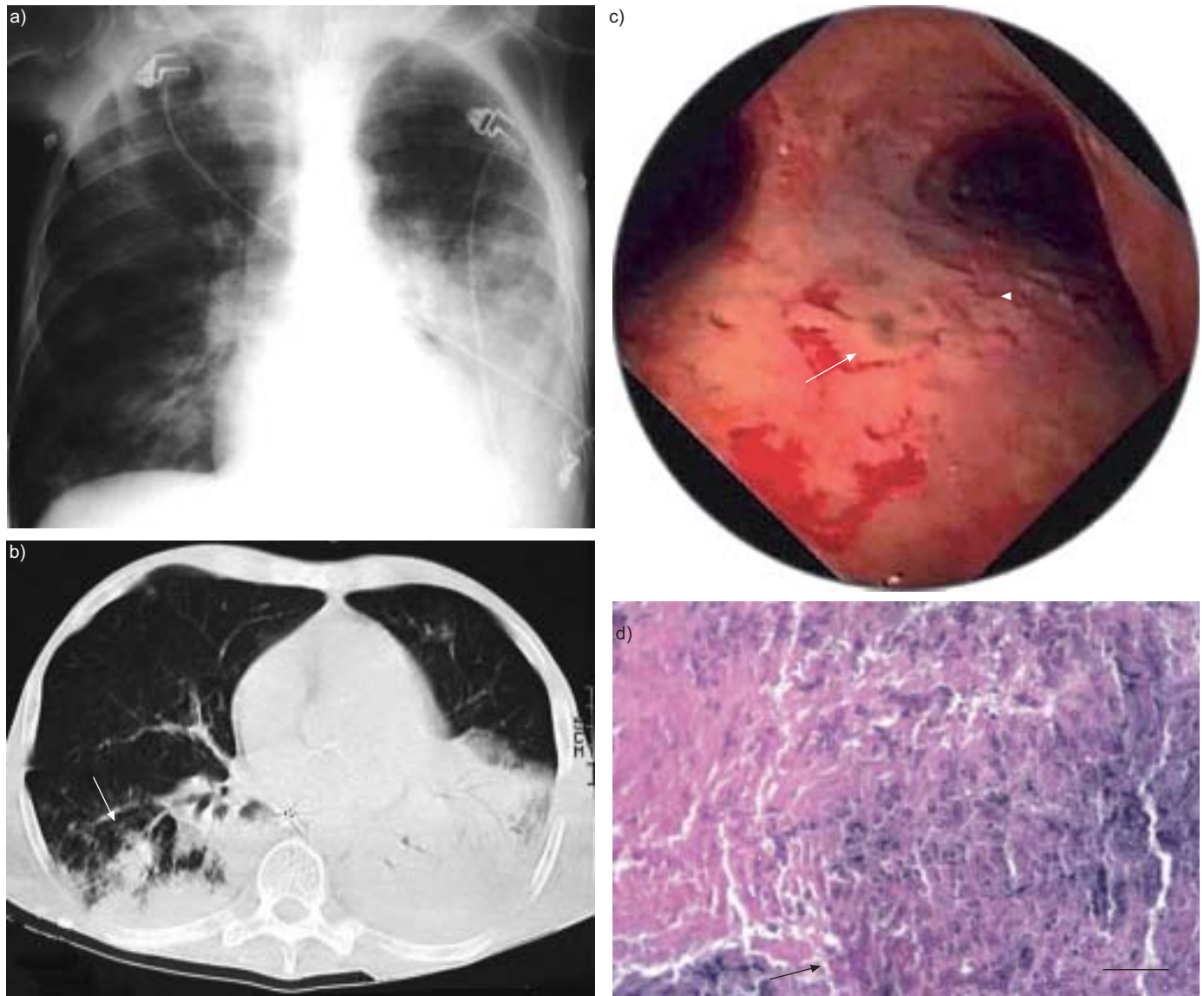


FIGURE 1. Successive procedures used to diagnose invasive pulmonary aspergillosis (IPA) in a 54-yr-old Global Initiative for Chronic Obstructive Lung Disease (GOLD) stage IV patient. a) Chest radiograph showing nodular infiltrates in the right lower lobe and consolidation of the left lower lobe. b) Chest computed tomography scan performed on the same day revealing nodular lesions in the right lower lobe (arrow) and pneumonia of the left lower lobe. c) Endoscopic view of the trachea showing mucosa covered by diffuse nodular yellowish pseudomembranes (arrow) extending into the right major bronchus (arrowhead). d) Microscopic section demonstrating branching hyphae invading the depth of the infarcted tracheal mucosa (arrow). Scale bar=50 μ m. Reproduced and modified from [12] with permission of the publisher.

sometimes difficult due to their poor lung status and function. Moreover, due to its poor yield, transbronchial lung biopsies must be performed only when the infection does not respond to adequate antifungal therapy.

Lung biopsy

As reported earlier, only histology can confirm IPA. Although transbronchial lung biopsies can provide lung tissue, the classical way to obtain parenchyma is through an open lung biopsy (by either classical thoracotomy or thoracoscopy). Nevertheless, in the COPD population, surgery is often precluded due to the poor lung function. In addition to its use as a diagnostic tool, lung resection may be therapeutic [18] (see section on surgical treatment).

Lung tissue can also be obtained by percutaneous needle biopsy, with a yield in the range of 50%; thus, negative results do not exclude the diagnosis [73]. Although percutaneous lung biopsy is particularly indicated for peripheral lesions [137], the risk of pneumothorax is of concern in COPD patients.

To enhance the chance to cure the patient, treatment should be started without any delay on the basis of a presumptive diagnosis alone. Lung biopsy should be performed when there is a doubt in the diagnosis of probable IPA.

Based on the current available data, and as the diagnosis of IPA is based on the results of several diagnostic tests, table 5 focuses on the combination of clinical features, radiological

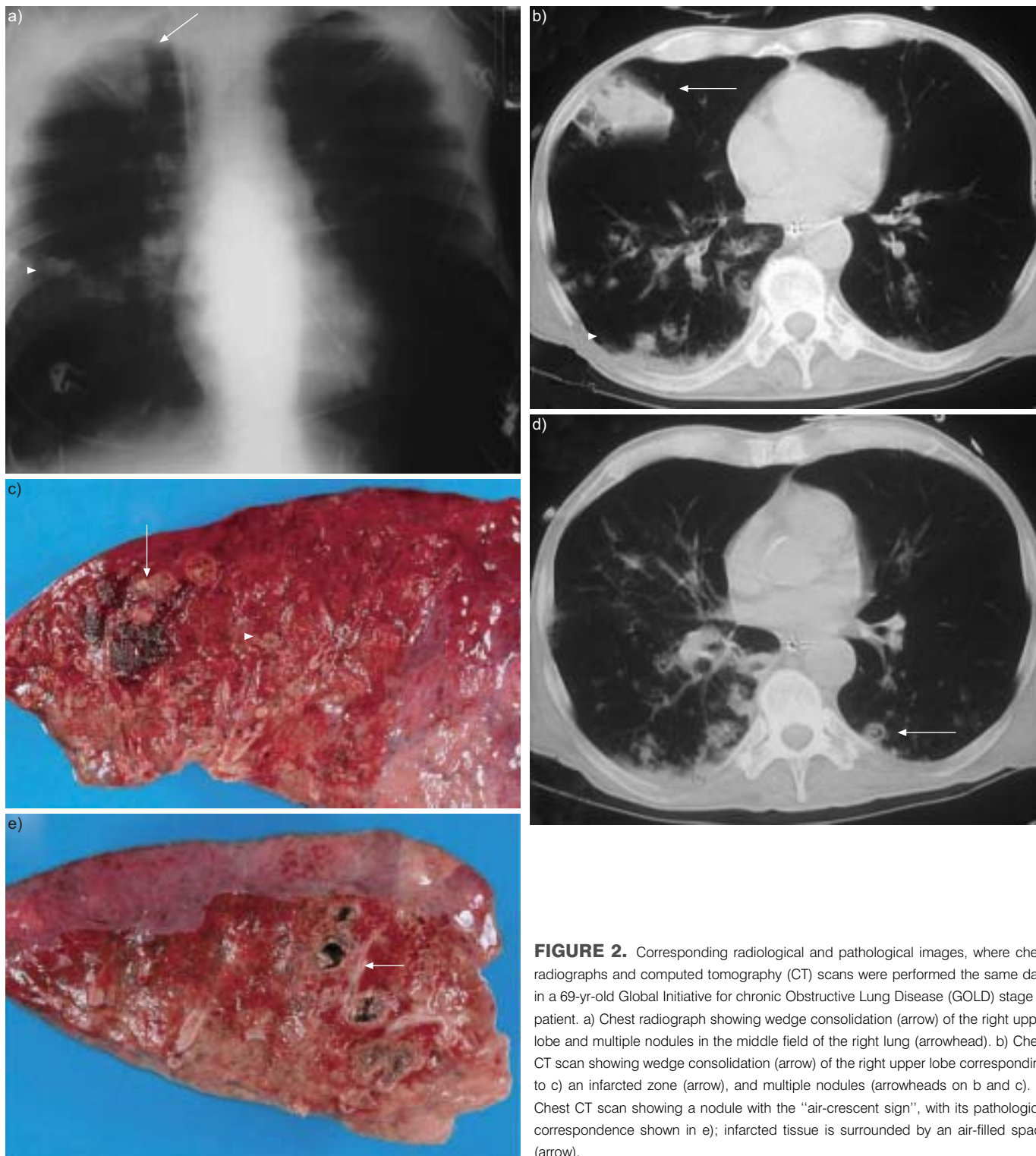


FIGURE 2. Corresponding radiological and pathological images, where chest radiographs and computed tomography (CT) scans were performed the same day, in a 69-yr-old Global Initiative for chronic Obstructive Lung Disease (GOLD) stage IV patient. a) Chest radiograph showing wedge consolidation (arrow) of the right upper lobe and multiple nodules in the middle field of the right lung (arrowhead). b) Chest CT scan showing wedge consolidation (arrow) of the right upper lobe corresponding to c) an infarcted zone (arrow), and multiple nodules (arrowheads on b and c). d) Chest CT scan showing a nodule with the “air-crescent sign”, with its pathological correspondence shown in e); infarcted tissue is surrounded by an air-filled space (arrow).

findings, microbiological results and serological information to provide diagnostic certainty to guide physicians.

THERAPY

CAILLOT *et al.* [74] demonstrated that up to 82% of patients with IPA survived with a strategy aimed at reducing time to

diagnosis and initiation of treatment. Although published data specific for COPD patients are lacking, it seems reasonable to recommend a thoracic CT scan as soon as IPA is suspected. In case of compatible lesion(s), treatment must be initiated promptly, followed by diagnostic procedures to better classify IPA (table 5).



FIGURE 3. A chest computed tomography scan showing probable invasive pulmonary aspergillosis in a 76-yr-old Global Initiative for Chronic Obstructive Lung Disease (GOLD) stage IV patient. Multiple nodules can be seen, some with the "halo sign" (arrow).

Treatment administered to patients in the selected studies (see Clinical features of IPA in COPD section) is summarised in table 6. In view of these data, studies are needed to evaluate the efficacy of new antifungals in the COPD population.

In addition, doses of steroids, if present, must be reduced to as low a level as possible because high steroid dosages have been reported to be a risk factor for IPA [138].

Curative treatments

Amphotericin B and itraconazole

Until recently, amphotericin B deoxycholate (AmB-d) was considered as the mainstay of therapy because of its broad antifungal activities and low cost, as well as its long-standing use in hospital. The recommended dosage is now $1 \text{ mg} \cdot \text{kg}^{-1} \cdot \text{day}^{-1}$, but may be increased to $1.5 \text{ mg} \cdot \text{kg}^{-1} \cdot \text{day}^{-1}$. Numerous side-effects limit its use, especially the high rate of renal failure. The renal impairment is dose-dependent, and with the high dosage, $\geq 30\%$ of patients will develop renal insufficiency.

Two different approaches were studied to decrease toxicities related to high dosage of AmB-d. First, continuous infusion, instead of administration over 2–6 h, was associated with a significant reduction of drug-related side-effects with similar efficacy [139, 140]. Yet, as fungal aetiologies were not clearly reported, implementation of these studies is limited.

Secondly, lipid formulations of amphotericin B (liposomal amphotericin B (AmBisome®; Gilead Sciences, Foster City, CA, USA), amphotericin B lipid complex (Abelcet®; Elan Pharma, Dublin, Ireland) and amphotericin B colloidal dispersion

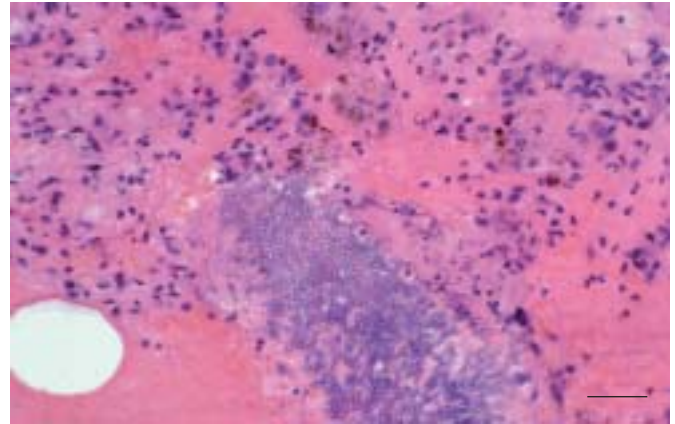


FIGURE 4. Histological confirmation of invasive pulmonary aspergillosis obtained by transbronchial lung biopsy in a 70-yr-old Global Initiative for Chronic Obstructive Lung Disease (GOLD) stage IV patient. Scale bar=50 μm .

(Amphotec®; Ben Venue Laboratories, Inc., Bedford, OH, USA)) can replace AmB-d due to their superior renal safety. They induce fewer infusion-related chills and fever, except Amphotec® [141], and hypokalaemia is reported to occur less frequently in patients receiving lipid formulations than in those under AmB-d [141]. Treatment is often prolonged until 15 days after the disappearance of symptoms, with a possible relay with itraconazole. The major limitation of such treatments is related to cost. Administration of AmB-d in fatty-acid emulsion is contraindicated due to infusion-related toxicity and lack of efficacy [142].

Itraconazole is as effective as AmB-d in IPA patients [143, 144]. It has been suggested that itraconazole could be used whenever oral treatment is possible, while AmB-d is favoured when an intravenous route is required. The recommended dosage is 600 mg for 3 days to obtain a rapid plateau and then $400 \text{ mg} \cdot \text{day}^{-1}$. The optimal duration of treatment is uncertain but may be as long as 6 months. The oral itraconazole solution has a better bio-availability than capsules and allows more stable blood levels. Serum concentration of itraconazole should be maintained at around $1,000 \text{ ng} \cdot \text{mL}^{-1}$ for itraconazole and its derivatives ($>250 \text{ ng} \cdot \text{mL}^{-1}$ if itraconazole is only considered). An *i.v.* solution, approved by the Food and Drug Administration in 1999, is now available, albeit in only a few countries. In one prospective, open and multicentred trial, the efficacy and safety of *i.v.* (200 mg *b.i.d.* for 48 h, then $200 \text{ mg} \cdot \text{day}^{-1}$ for 12 days) followed by oral itraconazole (capsules: 200 mg *b.i.d.*) were evaluated. A complete or partial response was observed in 48% (15 out of 31) of patients [145]. The main limitations of itraconazole use are related to its numerous drug interactions (including some benzodiazepines used in the intensive care unit for sedation), its poor bioavailability, as well as its negative inotropic effect that forces caution when administered to a patient suffering from cardiac heart failure or shock [146]. With the advent of new antifungal compounds, the use of itraconazole probably will be confined to consolidation therapy.

The efficacy of AmB-d, its lipid formulations and itraconazole in COPD patients is unknown.

TABLE 5 Diagnostic certainty of invasive pulmonary aspergillosis (IPA) in chronic obstructive pulmonary disease (COPD) patients

Clinical features [#]	Radiology [†]	Histopathology [†]	Microscopy	Culture/PCR [§]	Aspergillus antibody	Aspergillus antigen ^f	Diagnosis
None	No change	ND	ND/-	+	-	ND/-	Colonisation
Yes >3 months	Cavities >3 months	ND/-	ND/-	+/-	+	ND/-	Consider CPA
Yes	New nodule <3 months	ND/-	ND/-	-	ND/-	ND/-	Possible IPA ^{##}
Yes	New cavity <3 months	ND/-	ND/-	-	ND/-	ND/-	Possible IPA ^{**†}
Yes	New <3 months	ND/-	ND/-	+	ND/-	ND/-	Probable IPA
Yes	New <3 months	ND/-	ND/-	-	+	ND/-	Probable IPA
Yes	New <3 months	ND/-	ND/-	-	ND/-	+ × 2	Probable IPA
Yes	New <3 months	ND/-	+	-	ND/-	ND/-	Probable IPA
Yes/no	Yes	+	ND/-	ND/-	ND/-	ND/-	Probable IPA
Yes/no	Yes	+	ND/-	+ ^{§§}	ND/-	ND/-	Proven IPA
Yes/no	Yes	+	ND/-	ND/-	Any	+	Proven IPA

The following points are noteworthy. 1) IPA may be upgraded when other diagnostic tests are available. 2) Treatment for proven and probable IPA are, first choice: voriconazole; second: caspofungin; and third: lipid formulation of Amphotericin B deoxycholate. 3) In the case of possible IPA, close follow-up and consider additional diagnostic procedures, such as imaging, flexible bronchoscopy, techniques to obtain histology if possible, should be carried out. ND: not done; CPA: chronic pulmonary aspergillosis [23]. +: positive; -: negative. [#]: Antibiotic-resistant exacerbation, pneumonia, pneumonitis or bronchospasm, typically in COPD Global Initiative for Chronic Obstructive Lung Disease (GOLD) stage III or IV and currently or recently in receipt of corticosteroids. [†]: Distinctive findings more obvious on thoracic computed tomography scan and include one or more cavities, new nodules or pleural-based lesions typical of pulmonary infarction. [‡]: Dichotomous (45°) branching septate hyaline hyphae. [§]: PCR result can be accepted when licensed. ^f: Beware of false positives with some antibiotics, especially piperacillin/tazobactam. ^{##}: Consider alternative diagnosis, such as malignancy or other infections, e.g. cryptococcal or coccidioidal infection. ^{**†}: Consider alternative diagnosis such as mycobacterial or other fungal infections. ^{§§}: This result may be a standard culture or PCR result from another respiratory tract sample or from the biopsy or an immunology method of PCR specific to Aspergillus.

New drugs

Voriconazole

Efficacy of voriconazole (VRC) against IA was first demonstrated in some reports, including after the use of AmB-d, lipid formulation of amphotericin B deoxycholate, or itraconazole [32, 147–149]. These results were confirmed in a recent study that reported the superiority of VRC (two *i.v.* doses of

6 mg·kg⁻¹ on day 1 then 4 mg·kg⁻¹·12 h⁻¹ for ≥7 days, followed by 200 mg·12 h⁻¹ orally) *versus* AmB-d (*i.v.* 1–1.5 mg·kg⁻¹·day⁻¹) in a randomised, unblinded study that enrolled 277 patients. The survival rate at 12 weeks was 70.8 *versus* 57.9% (p=0.02) and drug-related events were observed in 343 *versus* 421 occasions (p=0.02) when VRC was compared with AmB-d [150].

TABLE 6 Treatment administered to patients in selected studies

Drugs used	Patients n	Outcome	Treatment [#] duration days
AmB-d	24	22 D/2 S	1–25/NA
AmB-d + inhaled AmB-d	1	S	75
AmB-d + instillation of AmB-d	1	D	NA
AmB-d + 5FC	2	2 D	NA
AmB-d + ITZ	6	6 D	3–14
AmB-d + ITZ + GM-CSF	2	2 D	17–23
AmB-d followed by ABLC	5	5 D	NA
ITZ followed by AmB-d	1	D	6
Fluconazole followed by AmB-d	1	D	10
No treatment	13	13 D	

Data from [12, 13, 34, 36, 37, 39–54]. AmB-d: Amphotericin B deoxycholate; D: death; S: survival; NA: not available; 5FC: 5-fluorocytosine; ITZ: itraconazole; GM-CSF: granulocyte-macrophage colony-stimulating factor; ABLC: amphotericin B lipid complex. [#]: Intravenous AmBd was administered at a daily dose of 0.1–1.3 mg·kg⁻¹ (data available in 25 patients) and ABLC at 5 mg·kg⁻¹·day⁻¹.

Although VRC appears to be well-tolerated, some clinical side-effects have been encountered frequently, such as visual disturbances (8–69%) and skin reactions (1–19%) [149–151]. Visual alterations included blurred vision, altered visual or colour perception, and photophobia. All these events were transient and resolved without intervention. Further human studies are needed to determine whether retinal changes observed in rats also occur during prolonged VRC therapy [151]. Among laboratory adverse events, increased liver function tests are encountered in 4.3–26.5% of patients, and the perturbation is more important with higher doses [149, 151–153]. Liver enzymes usually return to normal values after VRC discontinuation. Rare cases of hepatitis have been described [152, 154].

Due to accumulation of the VRC vehicle in the *i.v.* formulation when creatinine clearance is $<50 \text{ mL}\cdot\text{min}^{-1}$, oral administration is preferred as no adjustment in the dosage is necessary [151, 154]. Patients with moderate liver disease should receive a normal loading dose of VRC but the maintenance dose should be half the normal dose [151]. There are no safety data in patients with severe liver dysfunction. VRC is metabolised by the liver (CYP450 enzyme system) and is a substrate for and an inhibitor of the CYP2C9, CYP2C19 and CYP3A4 isoenzymes [149, 151]; thus, interaction problems can occur, as during itraconazole therapy (*e.g.* with phenytoin, rifampin, prednisolone (increased area under curve of ~30%), warfarin, omeprazole, grapefruit juice, *etc.*; a more complete list is reported in recent papers [151, 152, 154]). The observation that hepatic toxicity might be dose related should prompt attention to the “poor metaboliser” population (the activity of the CYP2C19 is low in 20% of non-Indian Asians based on genetic features, and VRC blood levels can increase up to four times higher than in the “normal metaboliser” population) [154].

In addition, VRC can also be administered orally [151]. The absorption is better when administered either 1 h before or after a meal.

In summary, to date, voriconazole is the sole drug that has demonstrated a better efficacy than AmB-d. Moreover, the drug is available for *i.v.* and oral use. However, some concerns exist about drug interactions and adverse events. Caution should be exercised in case of renal failure (avoidance of *i.v.* preparation) and moderate liver dysfunction.

Posaconazole

Posaconazole is a new triazole that recently showed some efficacy for fungal prophylaxis in high-risk haematological patients. However, at present only the oral route is available and, to date, the drug is not recognised as a first-line therapy in IA [155–157].

Echinocandin

Echinocandin targets the synthesis of 1,3- β -D-glucan, a major component of the fungal cell wall [158]. The efficacy of a 70-mg first-day loading dose followed by 50 mg daily of caspofungin was assessed through a salvage study of 83 patients (mainly with haematological malignancy) with proven or probable IA (77% had IPA); a favourable response was demonstrated in 37 (44.6%) patients [159]. Importantly, tolerance to the drug is good, with only a few adverse events reported to date [159,

160], such as fever, phlebitis at the infusion site and some elevations in alanine aminotransferase, aspartate aminotransferase and alkaline phosphatase levels (<5 times the upper limit of the normal range) [161].

No dosage adjustment is needed for patients aged >18 yrs, race, sex, renal impairment or haemodialysis, but a dose decrease to $35 \text{ mg}\cdot\text{day}^{-1}$ after a full loading dose is suggested in case of moderate hepatic insufficiency [158, 161]. No data are available for severe liver disease. Caspofungin is not subject to drug interactions mediated by the cytochrome P450 system [158]. However, the co-administration with inducers of drug clearance and/or mixed inducer/inhibitor may result in reductions in caspofungin concentrations and, therefore, an increase to $70 \text{ mg}\cdot\text{day}^{-1}$ may be necessary [158]. Caspofungin is available only as an *i.v.* preparation.

In short, echinocandin lipopeptides are a new class of antifungal agents that have demonstrated interesting activity against *Aspergillus* spp. Promising results have been reported in IPA. If these results are confirmed and are due to their excellent tolerance profile, these agents could be proposed as first-line therapy [162], like voriconazole. The main features of major antifungal agents are summarised in table 7.

Combination therapy

Although mortality rate is reduced by the use of VRC compared with AmB-d [150], outcome of patients suffering from IA remains uncertain. Therefore, with the introduction of the echinocandin class, which acts on another target in mould cell wall, it is possible that combination therapy can add some efficacy. The following beneficial effects could be expected: increased fungicidal activity; reduced side effects by diminishing doses of toxic drugs, such as AmB-d; and prevention of emergence of drug resistance. Laboratory data demonstrated additive-to-synergistic effects against *A. fumigatus* with the combination of caspofungin and AmB-d or itraconazole [158]. *In vitro* studies [163], some animal trials [164, 165] and few human reports suggest that the association of triazoles and echinocandin could improve the mortality rate in IA [166–171]. However, further clinical studies with combined therapy are needed before the concept can be validated.

Surgery

Although antifungal drugs represent the first choice in treatment of IA, eradication is rare as residual lesions are often present [159], and therefore potential recurrence is possible in the case of a new increase of immunodepression. To obviate IPA relapse, some authors have suggested the resection of residual lesion(s) in addition to medical therapy. This was suggested in patients suffering from haematological malignancies [18, 172–181]. In this setting, surgery was proposed when the lesions were close to pulmonary vessels to avoid life-threatening haemorrhage in the neutrophils' recovery period [18], or in case of diagnostic procedure. Nevertheless, surgical resection was associated with severe adverse events, including death, haemorrhage or pneumothorax [172, 174, 176, 181].

In COPD patients, surgical resection of IPA is generally excluded due to their poor pulmonary function, especially when corticosteroids are administered. Although surgery

TABLE 7 Main features of major antifungal agents

	AmB-d	L-AmB	Voriconazole	Caspofungin
Administration route (dosage)	<i>i.v.</i> (1–1.5 mg·kg ⁻¹ ·day ⁻¹)	<i>i.v.</i> (3–5 mg·kg ⁻¹ ·day ⁻¹)	<i>i.v.</i> (6 mg·kg ⁻¹ ·12 h ⁻¹ # then 4 mg·kg ⁻¹ ·12 h ⁻¹) Oral (400 mg·12 h ⁻¹ # then 200 mg·12 h ⁻¹)	<i>i.v.</i> (70 mg [†] then 50 mg·day ⁻¹)
Antifungal activity	Reference drug	As AmB-d	More active than AmB-d	Salvage therapy
Renal insufficiency	Increased renal failure	No limitation	Oral route preferred if clearance <50 mL·min ⁻¹	No limitation
Severe hepatic dysfunction	No limitation	No limitation	Reduce the dose Monitor toxicity	Reduce the dose Monitor toxicity
Major side effects	Renal toxicity Electrolyte wasting Fever Poor clinical tolerance	As AmB-d but less frequently ⁺	Visual disturbances Skin reactions Increased liver enzymes	Peripheral phlebitis Fever
Drug interactions	Few	Few	Numerous	Few

AmB-d: Amphotericin B deoxycholate; L-AmB: lipid formulation of amphotericin B deoxycholate. #: Loading dose, for a total of two doses; †: loading dose on day one; +: note that amphotericin B colloidal dispersion has more infusion-related toxicities than AmB-d.

could theoretically be considered in selected cases, both because it could be the only way to be fully curative and because minimal resection, such as wedge resection, might limit the functional defect [176, 180, 182], no recent study has been published to support this strategy.

Growth factors, cytokines and alternative therapies

In vitro studies found that corticosteroid-induced suppression of monocyte and neutrophils function was, at least partially, prevented by granulocyte-macrophage colony-stimulating factor (GM-CSF) and IFN- γ [58, 67, 183]. The beneficial effects of IFN- γ administration were also reported in patients suffering from chronic granulomatous disease [57, 184]. GM-CSF was added to IFN- γ for the treatment of a pseudomembranous necrotising bronchial aspergillosis. While the patient improved and survived, the relative contributions of antifungal agents and cytokines remain uncertain [185]. Clearly, more data are needed to assess the clinical usefulness of such drugs.

Some other therapeutic approaches have been reported, such as: the use of hyperbaric oxygenation for IA of the sinus [186]; the injection of AmB-d percutaneously in large pulmonary lesions from IA [187]; and the vaccination (either intranasally or subcutaneously) that could protect mice from lethal *A. fumigatus* infection [188]. However these approaches remain preliminary at this stage, the total number of patients included is still low and more studies are required to clarify their potential role in treatment of IPA. Other strategies using the immune pathways are under investigation and have been recently reviewed [62, 189].

Prophylactic treatments

Considering the poor prognosis of IPA and since early diagnosis and treatment improve the chance of survival, it is tempting to evaluate prophylactic treatment in patients at risk. However, data are lacking in COPD patients and results in haematological patients are not convincing.

Prevention of infection

As IPA diagnosis remains difficult and mortality rate is still high (up to 90%, depending on the underlying disease), prevention of infection is very important [9]. As a consequence, inside the hospital, it seems reasonable to eliminate obvious environmental sources of *Aspergillus* spp. and also by cleaning all the surfaces to avoid dust accumulation. In addition, to prevent outbreaks, environmental protection by elevating impenetrable barriers must be implemented during construction [190]. As has been proven for haematological patients [191], COPD patients should be advised to wear a high-efficiency mask, or to avoid exposure, whenever the risk of inhaling a large amount of *Aspergillus* during a transient environmental exposure is high. Due to permanent exposure to risk factors (*e.g.* corticosteroids) and their huge cost, high-efficiency particulate air filtration and laminar flow rooms are not applicable *per se* for COPD patients, although some effectiveness has been demonstrated for haematological patients [192].

Outside the hospital, while specific methods to control or eliminate *Aspergillus* spp. from the environment are lacking, prevention must be focused on the avoidance of high load sources, *e.g.* constructions, cellars or lofts, composts, *etc.* Recent reports suggest that IA could also be a water-acquired infection [193] and that pillows may contain high loads of *Aspergillus* [194]. Finally, if the patient is receiving corticosteroids, the dose should be decreased as much as is possible or even stopped altogether.

PROGNOSIS

Despite treatment, the IPA mortality rate remains high. In their review of the literature, LIN *et al.* [24] report an overall mortality of 58%, but reaching 86.7% for bone marrow transplant recipients and 88.1% for patients with central nervous system or disseminated aspergillosis. In another study, a favourable response (both complete and partial) to

TABLE 8 Future research needed to better identify *Aspergillus* infection in chronic obstructive disease (COPD) patients and to decrease mortality from the disease

Epidemiology

- 1) Incidence of IPA versus *Aspergillus* colonisation in COPD population
- 2) Role of steroids (dose?; inhaled?) in predisposing to IPA
- 3) Existence of specific risk factors related to COPD patients

Diagnosis

- 1) Validation of diagnostic algorithms
- 2) Place of noninvasive tests including antigenaemia, *Aspergillus* antibody detection and molecular diagnosis

Treatment

- 1) Validation of voriconazole as first-line therapy
- 2) Place of combination therapy
- 3) Place of surgery
- 4) Immunotherapy

Prevention

- 1) Are there some reliable measures to protect COPD population?

IPA: invasive pulmonary aspergillosis.

treatment was reported in 56% of patients with pulmonary diseases (no other specification was given) [25].

In contrast, when COPD criteria were clearly mentioned, all but three patients reported in the literature died despite treatment administration in 77% (table 6), and intensive care unit admission did not seem to modify this poor prognosis [12, 15, 16]. The duration between symptoms and diagnosis (table 2) may, at least partially, explain this very high mortality.

CONCLUSIONS

Although *Aspergillus* colonisation is frequent in COPD patients, IPA can occur and prompt diagnosis is important to provide the maximum chance of successful treatment. The first clinical signs are often protracted bronchospasm and/or antibiotic-resistant lower respiratory tract infection. In this context, the presence of *Aspergillus* spp. in the sputum must be regarded as the first clue of infection. As the chest radiograph may be normal early on in the course of the disease, a prompt CT scan is required to visualise mild alterations of the lung parenchyma. When possible, bronchoscopy is required to demonstrate mucosal modifications and allow biopsies, as well as BAL. There are insufficient data to support the use of serological tests. If the patient's status is severe, prompt therapy should be implemented to give the patient optimal chance of cure and, thereafter, diagnostic procedures must be conducted to confirm the clinical suspicion of IPA. Although AmB-d has been most extensively studied, the results of more recent studies suggest that VRC should be the first choice therapy. Patients receiving chronic steroid therapy should be provided with information on how to prevent contact with environmental sources of *Aspergillus* spp.

Clearly, more work needs to be carried out in order to better identify *Aspergillus* infection in chronic obstructive pulmonary disease patients and to decrease mortality from this devastating disease. Table 8 illustrates some of the important issues that require further clarification.

ACKNOWLEDGEMENTS

The authors would like to thank M. Delos (Dept of Pathology), who provided with courtesy the pathological images, and C. Deneffe (Dept of Scientific Support; both Mont-Godinne University Hospital, Yvoir, Belgium) for the illustrations.

REFERENCES

- 1 Streifel AJ, Lauer JL, Vesley D, Juni B, Rhame FS. *Aspergillus fumigatus* and other thermotolerant fungi generated by hospital building demolition. *Applied Environ Microbiol* 1983; 46: 375–378.
- 2 Latgé JP. The pathobiology of *Aspergillus fumigatus*. *Trends Microbiol* 2001; 9: 382–389.
- 3 Latgé JP. *Aspergillus fumigatus* and aspergillosis. *Clin Microbiol Rev* 1999; 12: 310–350.
- 4 Denning DW. State-of-the-art clinical article: invasive aspergillosis. *Clin Infect Dis* 1998; 26: 781–803.
- 5 McNeil MM, Nash SL, Hajjeh RA, et al. Trends in mortality due to invasive mycotic diseases in the United States, 1980–1997. *Clin Infect Dis* 2001; 33: 641–647.
- 6 Kontoyiannis DP, Bodey GP. Invasive aspergillosis in 2002: an update. *Eur J Clin Microbiol Infect Dis* 2002; 21: 161–172.
- 7 Yamazaki T, Kume H, Murase S, Yamashita E, Arisawa M. Epidemiology of visceral mycoses: analysis of data in Annual of the Pathological Autopsy Cases in Japan. *J Clin Microbiol* 1999; 37: 1732–1738.
- 8 Groll AH, Shah PM, Mentzel C, Schneider M, Just-Nuebling G, Huebner K. Trends in the postmortem epidemiology of invasive fungal infections at a University Hospital. *J Infect* 1996; 33: 23–32.
- 9 Warnock DW, Hajjeh RA, Lasker BA. Epidemiology and prevention of invasive aspergillosis. *Curr Infect Dis Rep* 2001; 3: 507–516.
- 10 Pegues CF, Daar ES, Murthy AR. The epidemiology of invasive pulmonary aspergillosis at a large teaching hospital. *Infect Control Hosp Epidemiol* 2001; 22: 370–374.
- 11 Ader F, Nseir S, Le Berre R, et al. Invasive pulmonary aspergillosis in chronic obstructive pulmonary disease: an emerging fungal pathogen. *Clin Microbiol Infect* 2005; 11: 427–429.
- 12 Bulpa PA, Dive AM, Garrino MG, et al. Chronic obstructive pulmonary disease patients with invasive pulmonary aspergillosis: benefits of intensive care? *Intensive Care Med* 2001; 27: 59–67.
- 13 Rello J, Esandi ME, Mariscal D, Gallego M, Domingo C, Valles J. Invasive pulmonary aspergillosis in patients with chronic obstructive pulmonary disease: report of eight cases and review. *Clin Infect Dis* 1998; 26: 1473–1475.
- 14 Dimopoulos G, Piagnerelli M, Berré J, Eddafali B, Salmon I, Vincent JL. Disseminated aspergillosis in intensive care unit patients: an autopsy study. *J Chemother* 2003; 15: 71–75.
- 15 Meersseman W, Vandecasteele SJ, Wilmer A, Verbeken E, Peetermans WE, Van Wijngaerden E. Invasive aspergillosis in critically ill patients without malignancy. *Am J Respir Crit Care Med* 2004; 170: 621–625.
- 16 Garnacho-Montero J, Amaya-Villar R, Ortiz-Leyba C, et al. Isolation of *Aspergillus* spp. from the respiratory tract in

- critically ill patients: risk factors, clinical presentation and outcome. *Crit Care* 2005; 9: R191–R199.
- 17 von Eiff M, Roos N, Schulden R, Hesse M, Zühlsdorf M, van de Loo J. Pulmonary aspergillosis: early diagnosis improves survival. *Respiration* 1995; 62: 341–347.
 - 18 Caillot D, Casasnovas O, Bernard A, et al. Improved management of invasive pulmonary aspergillosis in neutropenic patients using early thoracic computed tomographic scan and surgery. *J Clin Oncol* 1997; 15: 139–147.
 - 19 Pepys J, Riddell RW, Citron KM, Clayton YM, Short EI. Clinical and immunologic significance of *Aspergillus fumigatus* in the sputum. *Am Rev Respir Dis* 1959; 80: 167–180.
 - 20 Yu VL, Muder RR, Poorsattar A. Significance of isolation of *Aspergillus* from the respiratory tract in diagnosis of invasive pulmonary aspergillosis. Results from a three-yr prospective study. *Am J Med* 1986; 81: 249–254.
 - 21 Pauwels RA, Buist AS, Calverley PM, Jenkins CR, Hurd SS, on behalf of the GOLD Scientific Committee, Global strategy for the diagnosis, management, and prevention of chronic obstructive pulmonary disease NHLBI/WHO Global Initiative for Chronic Obstructive Lung Disease (GOLD) Workshop Summary. *Am J Respir Crit Care Med* 2001; 163: 1256–1276.
 - 22 Global Initiative for Chronic Obstructive Lung Disease. Global strategy for the diagnosis, management and prevention of chronic obstructive pulmonary disease. NHLBI/WHO workshop report. Bethesda, National Heart, Lung and Blood Institute, April 2001; Update of the Management Sections. www.goldcopd.com. Date last updated: July 2003. Date last accessed: June 27, 2007.
 - 23 Hope WW, Walsh TJ, Denning DW. The invasive and saprophytic syndromes due to *Aspergillus* spp. *Med Mycol* 2005; 43: Suppl. 1, S207–S238.
 - 24 Lin SJ, Schranz J, Teutsch SM. Aspergillosis case-fatality rate: systematic review of the literature. *Clin Infect Dis* 2001; 32: 358–366.
 - 25 Patterson TF, Kirkpatrick WR, White M, et al. Invasive aspergillosis: disease spectrum, treatment practices and outcomes. *Medicine* 2000; 79: 250–260.
 - 26 Rodrigues J, Niederman MS, Fein AM, Pai PB. Nonresolving pneumonia in steroid-treated patients with obstructive lung disease. *Am J Med* 1992; 93: 29–34.
 - 27 Gustafson TL, Schaffner W, Lavelly GB, Stratton CW, Johnson HK, Hutcheson RH. Invasive aspergillosis in renal transplant recipients: correlation with corticosteroid therapy. *J Infect Dis* 1983; 148: 230–238.
 - 28 Grow WB, Moreb JS, Roque D, et al. Infections post transplant. Late onset of invasive *Aspergillus* infection in bone marrow transplant patients at a university hospital. *Bone Marrow Transplant* 2002; 29: 15–19.
 - 29 Stuck AE, Minder CE, Frey FJ. Risk of infectious complications in patients taking glucocorticosteroids. *Rev Infect Dis* 1989; 11: 954–963.
 - 30 Muquim A, Dial S, Menzies D. Invasive aspergillosis in patients with chronic obstructive pulmonary diseases. *Can Respir J* 2005; 12: 199–204.
 - 31 Leav BA, Fanburg B, Hadley S. Invasive pulmonary aspergillosis associated with high-dose inhaled fluticasone. *N Engl J Med* 2000; 343: 586.
 - 32 Chow L, Brown NE, Kunimoto D. An unusual case of pulmonary invasive aspergillosis and aspergilloma cured with voriconazole in a patient with cystic fibrosis. *Clin Infect Dis* 2002; 35: e106–e110.
 - 33 Barouky R, Badet M, Saint Denis M, Soubirou JL, Philit F, Guerin C. Inhaled corticosteroids in chronic obstructive pulmonary disease and disseminated aspergillosis. *Eur J Intern Med* 2003; 14: 380–382.
 - 34 Ali ZA, Ali AA, Tempest ME, Wiselka MJ. Invasive pulmonary aspergillosis complicating chronic obstructive pulmonary disease in an immunocompetent patient. *J Postgrad Med* 2003; 49: 78–80.
 - 35 Bulpa P, Dive A, Delos M, Pouthier F, Delaunoy L. Aspergillose pulmonaire invasive et infection à virus influenza chez des patients bronchitiques chroniques? [Invasive pulmonary aspergillosis and influenza virus infection in patients with chronic bronchitis?]. *Rev Pneumol Clin* 1995; 51: 300–301.
 - 36 Urban P, Chevrolet JC, Schifferli J, Sauteur E, Cox J. Aspergillose pulmonaire invasive associée à une infection aiguë à virus influenza. [Invasive pulmonary aspergillosis associated with an acute influenza virus infection]. *Rev Mal Resp* 1985; 2: 255–257.
 - 37 Ordroneau J, de Lajarte AY, Chollet S, Germaud P, Moineau D, Chailleux E. Aspergillose invasive disséminée associée à une infection à *mycoplasma pneumoniae*. [Disseminated invasive aspergillosis associated with *Mycoplasma pneumoniae* infection]. *Rev Mal Resp* 1987; 4: 273–275.
 - 38 Ascioğlu S, Rex JH, de Pauw B, et al. Defining opportunistic invasive fungal infections in immunocompromised patients with cancer and hematopoietic stem cell transplants: an international consensus. *Clin Infect Dis* 2002; 34: 7–14.
 - 39 Pittet D, Huguenin T, Dharan S, et al. Unusual cause of lethal pulmonary aspergillosis in patients with chronic obstructive pulmonary disease. *Am J Respir Crit Care Med* 1996; 154: 541–544.
 - 40 Conesa D, Rello J, Valles J, Mariscal D, Ferreres JC. Invasive aspergillosis: a life-threatening complication of short-term steroid treatment. *Ann Pharmacother* 1995; 29: 1235–1237.
 - 41 Crean JM, Niederman MS, Fein AM, Feinsilver SH. Rapidly progressive respiratory failure due to *Aspergillus pneumoniae*: a complication of short-term corticosteroid therapy. *Crit Care Med* 1992; 20: 148–150.
 - 42 Rodrigues J, Niederman MS, Fein AM, Pai PB. Nonresolving pneumonia in steroid-treated patients with obstructive lung disease. *Am J Med* 1992; 93: 29–34.
 - 43 Kimmerling EA, Fedrick JA, Tenholder MF. Invasive *Aspergillus niger* with fatal pulmonary oxalosis in chronic obstructive pulmonary disease. *Chest* 1992; 101: 870–872.
 - 44 Thommi G, Bell G, Liu J, Nugent K. Spectrum of invasive pulmonary aspergillosis in immunocompetent patients with chronic obstructive pulmonary disease. *South Med J* 1991; 84: 828–831.
 - 45 Palmer LB, Schiff MJ. Rapidly progressive pneumonia in a patient with chronic obstructive pulmonary disease. *Chest* 1989; 95: 179–180.
 - 46 Wiest PM, Flanagan T, Salata RA, Shlaes DM, Katzman M, Lederman MM. Serious infectious complications of

- corticosteroid therapy for COPD. *Chest* 1989; 95: 1180–1184.
- 47 George PJ, Boffa PB, Naylor CP, Higenbottam TW. Necrotising pulmonary aspergillosis complicating the management of patients with obstructive airways disease. *Thorax* 1983; 38: 478–480.
 - 48 Pittokopitis K, Herriott DT, Shirey JK. Massive fatal hemoptysis secondary to invasive aspergillosis in a patient with COPD. *Chest* 1983; 83: 583.
 - 49 Kallenbach J, Dusheiko J, Block CS, Bethlehem B, Koornhof HJ, Zwi S. *Aspergillus pneumonia* – a cluster of four cases in an intensive care unit. *S Afr Med J* 1977; 52: 919–923.
 - 50 Hovenden JL, Nicklason F, Barnes RA. Invasive pulmonary aspergillosis in non-immunocompromised patients. *BMJ* 1991; 302: 583–584.
 - 51 Pouchelon E, Murriss-Espin M, Didier A, et al. Invasive pulmonary aspergillosis in 4 patients with acute decompensation of chronic respiratory insufficiency. *Rev Mal Respir* 1993; 10: 325–332.
 - 52 Nicholson AG, Sim KM, Keogh BF, Corrin B. Pseudomembranous necrotising bronchial aspergillosis complicating chronic airways limitation. *Thorax* 1995; 50: 807–808.
 - 53 Hines DW, Haber MH, Yaremko L, Britton C, McLawhon RW, Harris AA. Pseudomembranous tracheobronchitis caused by *Aspergillus*. *Am Rev Respir Dis* 1991; 143: 1408–1411.
 - 54 Kistemann T, Huneburg H, Exner M, Vacata V, Engelhart S. Role of increased environmental *Aspergillus* exposure for patients with chronic obstructive pulmonary disease (COPD) treated with corticosteroids in an intensive care unit. *Int J Hyg Environ Health* 2002; 204: 347–351.
 - 55 Shoham S, Levitz S. The immune response to fungal infections. *Br J Haematol* 2005; 129: 569–582.
 - 56 Schaffner A, Douglas H, Braude A. Selective protection against *Conidia* by mononuclear and against *Mycelia* by polymorphonuclear phagocytes in resistance to *Aspergillus*. *J Clin Invest* 1982; 69: 617–631.
 - 57 Levitz SM. Overview of host defences in fungal infections. *Clin Infect Dis* 1992; 14: Suppl. 1, S37–S42.
 - 58 Roilides E, Uhlig K, Venzon D, Pizzo PA, Walsh TJ. Prevention of corticosteroid-induced suppression of human polymorphonuclear leukocyte-induced damage of *Aspergillus fumigatus* hyphae by granulocyte colony-stimulating factor and gamma interferon. *Infect Immun* 1993; 61: 4870–4877.
 - 59 Balloy V, Huerre M, Latgé JP, Chignard M. Differences in patterns of infection and inflammation for corticosteroid treatment and chemotherapy in experimental invasive pulmonary aspergillosis. *Infect Immun* 2005; 73: 494–503.
 - 60 Morrison BE, Park SJ, Mooney JM, Mehrad B. Chemokine-mediated recruitment of NK cells is a critical host defense mechanism in invasive aspergillosis. *J Clin Invest* 2003; 112: 1862–1870.
 - 61 Walsh TJ, Roilides E, Cortez K, Kottlilil S, Bailey J, Lyman CA. Control, immunoregulation, and expression of innate pulmonary host defenses against *Aspergillus fumigatus*. *Med Mycol* 2005; 43: Suppl. 1, S165–S172.
 - 62 Feldmesser M. Prospects of vaccines for invasive aspergillosis. *Med Mycol* 2005; 43: 571–587.
 - 63 Philippe B, Ibrahim-Granet O, Prévost MC, et al. Killing of *Aspergillus fumigatus* by alveolar macrophages mediated by reactive oxidant intermediates. *Infect Immun* 2003; 71: 3034–3042.
 - 64 Ng TTC, Robson GD, Denning DW. Hydrocortisone-enhanced growth of *Aspergillus* spp.: implications for pathogenesis. *Microbiology* 1994; 140: 2475–2479.
 - 65 Schaffner A. Therapeutic concentrations of glucocorticoids suppress the antimicrobial activity of human macrophages without impairing their responsiveness to gamma interferon. *J Clin Invest* 1985; 76: 1755–1764.
 - 66 Diamond RD. Inhibition of monocyte-mediated damage to fungal hyphae by steroid hormones. *J Infect Dis* 1983; 147: 160.
 - 67 Roilides E, Uhlig K, Venzon D, Pizzo PA, Walsh TJ. Enhancement of oxidative response and damage caused by human neutrophils to *Aspergillus fumigatus* hyphae by granulocyte colony-stimulating factor and gamma Interferon. *Infect Immun* 1993; 61: 1185–1193.
 - 68 Lionakis MS, Kontoyiannis DP. Glucocorticoids and invasive fungal infections. *Lancet* 2003; 362: 1828–1838.
 - 69 Berenguer J, Allende MC, Lee JW, et al. Pathogenesis of pulmonary aspergillosis. Granulocytopenia versus cyclosporine and methylprednisolone-induced immunosuppression. *Am J Respir Crit Care Med* 1995; 152: 1079–1086.
 - 70 Hanania N, Chapman K, Kesten S. Adverse effects of inhaled corticosteroids. *Am J Med* 1995; 98: 196–208.
 - 71 Burge S. Oral or inhaled corticosteroids for patients with chronic obstructive pulmonary disease. In: Siafakis NM, ed. Management of Chronic Obstructive Pulmonary Disease. *Eur Respir Mon* 2006; 38: 281–295.
 - 72 Hartemink KJ, Paul MA, Spijkstra JJ, Girbes AR, Polderman KH. Immunoparalysis as a cause for invasive aspergillosis? *Intensive Care Med* 2003; 29: 2068–2071.
 - 73 Jantunen E, Piilonen A, Volin L, et al. Diagnostic aspects of invasive *Aspergillus* infections in allogeneic BMT recipients. *Bone Marrow Transplant* 2000; 25: 867–871.
 - 74 Caillot D, Mannone L, Cuisenier B, Couaillier JF. Role of early diagnosis and aggressive surgery in the management of invasive pulmonary aspergillosis in neutropenic patients. *Clin Microbiol Infect* 2001; 7: 54–61.
 - 75 Maertens J, Van Eldere J, Verhaegen J, Verbeken E, Verschakelen J, Boogaerts M. Use of circulating galactomannan screening for early diagnosis of invasive aspergillosis in allogeneic stem cell transplant recipients. *J Infect Dis* 2002; 186: 1297–1306.
 - 76 Montoya JG, Chaparro SV, Celis D, et al. Invasive aspergillosis in the setting of cardiac transplantation. *Clin Infect Dis* 2003; 37: Suppl. 3, S281–S292.
 - 77 Comstock GW, Palmer CE, Stone RW, Goodman NL. Fungi in the sputum of normal men. *Mycopathol Mycol Appl* 1974; 54: 55–62.
 - 78 Strimlan CV, Dines DE, Rodgers-Sullivan RF, Roberts GD, Sheehan WC. Respiratory tract *Aspergillus*. Clinical significance. *Minn Med* 1980; 63: 25–29.
 - 79 Kahn FW, Jones JM, England DM. The role of bronchoalveolar lavage in the diagnosis of invasive pulmonary aspergillosis. *Am J Clin Pathol* 1986; 86: 518–523.

- 80** Andreas S, Heindl S, Wattky C, Möller K, Rüchel R. Diagnosis of pulmonary aspergillosis using optical brighteners. *Eur Respir J* 2000; 15: 407–411.
- 81** Nalesnik MA, Myerowitz RL, Jenkins R, Lenkey J, Herbert D. Significance of *Aspergillus* species isolated from respiratory secretions in the diagnosis of invasive pulmonary aspergillosis. *J Clin Microbiol* 1980; 11: 370–376.
- 82** Horvath JA, Dummer S. The use of respiratory-tract cultures in the diagnosis of invasive pulmonary aspergillosis. *Am J Med* 1996; 100: 171–178.
- 83** Greub G, Bille J. *Aspergillus* species isolated from clinical specimens: suggested clinical and microbiological criteria to determine significance. *Clin Microbiol Infect* 1998; 4: 710–716.
- 84** Fisher BD, Armstrong D, Yu B, Gold JW. Invasive aspergillosis. Progress in early diagnosis and treatment. *Am J Med* 1981; 71: 571–577.
- 85** Kaiser L, Huguenin T, Lew PD, Chapuis B, Pittet D. Invasive aspergillosis. Clinical features of 35 proven cases at a single institution. *Medicine* 1998; 77: 188–194.
- 86** Perfect JR, Cox GM, Lee JY, et al. The impact of culture isolation of *Aspergillus* species: a hospital-based survey of aspergillosis. *Clin Infect Dis* 2001; 33: 1824–1833.
- 87** Mannino DM. Chronic obstructive pulmonary disease: definition and epidemiology. *Respir Care* 2003; 48: 1185–1193.
- 88** Stynen D, Goris A, Sarfati J, Latgé JP. A new sensitive sandwich enzyme-linked immunosorbent assay to detect Galactofuran in patients with invasive aspergillosis. *J Clin Microbiol* 1995; 33: 497–500.
- 89** Maertens J, Verhaegen J, Demuyneck H, et al. Autopsy-controlled prospective evaluation of serial screening for circulating Galactomannan by a sandwich enzyme-linked immunosorbent assay for hematological patients at risk for invasive aspergillosis. *J Clin Microbiol* 1999; 37: 3223–3228.
- 90** Ulusakarya A, Chachaty E, Vantelon JM, et al. Surveillance of *Aspergillus* galactomannan antigenemia for invasive aspergillosis by enzyme-linked immunosorbent assay in neutropenic patients treated for hematological malignancies. *Hematol J* 2000; 1: 111–116.
- 91** Williamson ECM, Oliver DA, Johnson EM, Foot ABM, Marks DI, Warnock DW. *Aspergillus* antigen testing in bone marrow transplant recipients. *J Clin Pathol* 2000; 53: 362–366.
- 92** Weisser M, Rausch C, Droll A, et al. Galactomannan does not precede major signs on a pulmonary computerized tomographic scan suggestive of invasive aspergillosis in patients with hematological malignancies. *Clin Infect Dis* 2005; 41: 1143–1149.
- 93** Herbrecht R, Letscher-Bru V, Oprea C, et al. *Aspergillus* galactomannan detection in the diagnosis of invasive aspergillosis in cancer patients. *J Clin Oncol* 2002; 20: 1898–1906.
- 94** Sulahian A, Tabouret M, Ribaud P, et al. Comparison of an enzyme immunoassay and latex agglutination test for detection of galactomannan in the diagnosis of invasive aspergillosis. *Eur J Clin Microbiol Infect Dis* 1996; 15: 139–145.
- 95** Maertens J, Verhaegen J, Lagrou K, Van Eldere J, Boogaerts M. Screening for circulating galactomannan as a noninvasive diagnostic tool for invasive aspergillosis in prolonged neutropenic patients and stem cell transplantation recipients: a prospective validation. *Blood* 2001; 97: 1604–1610.
- 96** Bretagne S, Marmorat-Khuong A, Kuentz M, Latgé JP, Bart-Delabesse E, Cordonnier C. Serum *Aspergillus* galactomannan antigen testing by sandwich ELISA: practical use in neutropenic patients. *J Infect* 1997; 35: 7–15.
- 97** Sulahian A, Boutboul F, Ribaud P, Leblanc T, Lacroix C, Derouin F. Value of antigen detection using an enzyme immunoassay in the diagnosis and prediction of invasive aspergillosis in two adult and paediatric hematology units during a 4-year prospective study. *Cancer* 2001; 91: 311–318.
- 98** Maertens J, Theunissen K, Verbeken E, et al. Prospective clinical evaluation of lower cut-offs for galactomannan detection in adult neutropenic cancer patients and haematological stem cell transplant recipients. *Br J Haematol* 2004; 126: 852–860.
- 99** Mennink-Kersten MA, Donnelly JP, Verweij PE. Detection of circulating galactomannan for the diagnosis and management of invasive aspergillosis. *Lancet Infect Dis* 2004; 4: 349–357.
- 100** Boutboul F, Alberti C, Leblanc T, et al. Invasive aspergillosis in allogeneic stem cell transplant recipients: increasing antigenemia is associated with progressive disease. *Clin Infect Dis* 2002; 34: 939–943.
- 101** Caillot D, Couaillier JF, Bernard A, et al. Increasing volume and changing characteristics of invasive pulmonary aspergillosis on sequential thoracic computed tomography scans in patients with neutropenia. *J Clin Oncol* 2001; 19: 253–259.
- 102** Sulahian A, Touratier S, Ribaud P. False positive test for aspergillus antigenemia related to concomitant administration of piperacillin and tazobactam. *N Engl J Med* 2003; 349: 2366–2367.
- 103** Viscoli C, Machetti M, Cappellano P, et al. False-positive galactomannan Platelia *Aspergillus* test results for patients receiving piperacillin-tazobactam. *Clin Infect Dis* 2004; 38: 913–916.
- 104** Adam O, Aupérin A, Wilquin F, Bourhis JH, Gachot B, Chachaty E. Treatment with piperacillin-tazobactam and false-positive *Aspergillus* galactomannan antigen test results for patients with hematological malignancies. *Clin Infect Dis* 2004; 38: 917–920.
- 105** Maertens J, Theunissen K, Verhoef G, Van Eldere J. False-positive *Aspergillus* galactomannan antigen test results. *Clin Infect Dis* 2004; 39: 289–290.
- 106** Wheat LJ. Rapid diagnosis of invasive aspergillosis by antigen detection. *Transpl Infect Dis* 2003; 5: 158–166.
- 107** Mennink-Kersten MA, Ruegebrink D, Klont RR, et al. Bifidobacterial lipoglycan as a new cause for false-positive platelia *Aspergillus* enzyme-linked immunosorbent assay reactivity. *J Clin Microbiol* 2005; 43: 3925–3931.
- 108** Swanink CMA, Meis JFG, Rijs AJM, Donnelly JP, Verweij PE. Specificity of a sandwich enzyme-linked immunosorbent assay for detecting *Aspergillus* galactomannan. *J Clin Microbiol* 1997; 35: 257–260.

- 109** Yamakami Y, Hashimoto A, Yamagata E, *et al.* Evaluation of PCR for detection of DNA specific for *Aspergillus* species in sera of patients with various forms of pulmonary aspergillosis. *J Clin Microbiol* 1998; 36: 3619–3623.
- 110** Kami M, Fukui T, Ogawa S, *et al.* Use of real-time PCR on blood samples for diagnosis of invasive aspergillosis. *Clin Infect Dis* 2001; 33: 1504–1512.
- 111** White PL, Linton CJ, Perry MD, Johnson EM, Barnes RA. The evolution and evaluation of a whole blood polymerase chain reaction assay for the detection of invasive aspergillosis in hematology patients in a routine clinical setting. *Clin Infect Dis* 2006; 42: 479–486.
- 112** Garcia ME, Blanco JL, Caballero J, Gargallo-Viola D. Anticoagulants interfere with PCR used to diagnose invasive aspergillosis. *J Clin Microbiol* 2002; 40: 1567–1568.
- 113** Kami M, Tanaka Y, Kanda Y, *et al.* Computed tomographic scan of the chest, latex agglutination test and plasma (1→3)- β -D-glucan assay in early diagnosis of invasive pulmonary aspergillosis: a prospective study of 215 patients. *Haematologica* 2000; 85: 745–752.
- 114** Pazos C, Pontón J, Del Palacio A. Contribution of (1→3)- β -D-glucan chromogenic assay to diagnosis and therapeutic monitoring of invasive aspergillosis in neutropenic adult patients: a comparison with serial screening for circulating galactomannan. *J Clin Microbiol* 2005; 43: 299–305.
- 115** Denning DW, Riniotis K, Dobrashian R, Sambatakou H. Chronic cavitory and fibrosing pulmonary and pleural aspergillosis: case series, proposed nomenclature change, and review. *Clin Infect Dis* 2003; 37: Suppl. 3, S265–S280.
- 116** Hope WW, Walsh TJ, Denning DW. Laboratory diagnosis of invasive aspergillosis. *Lancet Infect Dis* 2005; 5: 609–622.
- 117** Kuhlman JE, Fishman EK, Siegelman SS. Invasive pulmonary aspergillosis in acute leukaemia: characteristic findings on CT, the CT halo sign, and the role of CT in early diagnosis. *Radiology* 1985; 157: 611–614.
- 118** Kuhlman JE, Fishman EK, Burch PA, Karp JE, Zerhouni EA, Siegelman SS. CT of invasive pulmonary aspergillosis. *AJR Am J Roentgenol* 1988; 150: 1015–1020.
- 119** White D. *Aspergillus* pulmonary infections in transplant recipients. *Clin Chest Med* 2005; 26: 661–674.
- 120** Ergin F, Arslan H, Azap A, Demirhan B, Karakayali H, Haberal M. Invasive aspergillosis in solid-organ transplantation: report of eight cases and review of the literature. *Transpl Int* 2003; 16: 280–286.
- 121** Reichenberger F, Habicht J, Matt P, *et al.* Diagnostic yield of bronchoscopy in histologically proven invasive pulmonary aspergillosis. *Bone Marrow Transplant* 1999; 24: 1195–1199.
- 122** Brown MJ, Worthy SA, Flint JDA, Müller NL. Invasive aspergillosis in the immunocompromised host: utility of computed tomography and bronchoalveolar lavage. *Clin Radiol* 1998; 53: 255–257.
- 123** Levy H, Horak DA, Tegtmeier BR, Yokota SB, Forman SJ. The value of bronchoalveolar lavage and bronchial washings in the diagnosis of invasive pulmonary aspergillosis. *Respir Med* 1992; 86: 243–248.
- 124** Verweij PE, Latge JP, Rijs AJ, *et al.* Comparison of antigen detection and PCR assay using bronchoalveolar lavage fluid for diagnosing invasive pulmonary aspergillosis in patients receiving treatment for hematological malignancies. *J Clin Microbiol* 1995; 33: 3150–3153.
- 125** Bretagne S, Costa JM, Marmorat-Khuong A, *et al.* Detection of *Aspergillus* species DNA in bronchoalveolar lavage samples by competitive PCR. *J Clin Microbiol* 1995; 33: 1164–1168.
- 126** Buchheidt D, Baust C, Skladny H, *et al.* Detection of *Aspergillus* species in blood and bronchoalveolar lavage samples from immunocompromised patients by means of 2-step polymerase chain reaction: clinical results. *Clin Infect Dis* 2001; 33: 428–435.
- 127** Raad I, Hanna H, Huaranga A, Sumoza D, Hachem R, Albitar M. Diagnosis of invasive pulmonary aspergillosis using polymerase chain reaction-based detection of *Aspergillus* in BAL. *Chest* 2002; 121: 1171–1176.
- 128** Buchheidt D, Baust C, Skladny H, Baldus M, Bräuninger S, Hehlmann R. Clinical evaluation of a polymerase chain reaction assay to detect *Aspergillus* species in bronchoalveolar lavage samples of neutropenic patients. *Br J Haematol* 2002; 116: 803–811.
- 129** Sanguinetti M, Posteraro B, Pagano L, *et al.* Comparison of real-time PCR, conventional PCR, and galactomannan antigen detection by enzyme-linked immunosorbent assay using bronchoalveolar lavage fluid samples from hematology patients for diagnosis of invasive pulmonary aspergillosis. *J Clin Microbiol* 2003; 41: 3922–3925.
- 130** Rantakokko-Jalava K, Laaksonen S, Issakainen J, *et al.* Semiquantitative detection by real-time PCR of *Aspergillus fumigatus* in bronchoalveolar lavage fluids and tissue biopsy specimens from patients with invasive aspergillosis. *J Clin Microbiol* 2003; 41: 4304–4311.
- 131** Jones ME, Fox AJ, Barnes AJ, *et al.* PCR-ELISA for the early diagnosis of invasive pulmonary aspergillus infection in neutropenic patients. *J Clin Pathol* 1998; 51: 652–656.
- 132** Tang CM, Holden DW, Aufauvre-Brown A, Cohen J. The detection of *Aspergillus* spp. by polymerase chain reaction and its evaluation in bronchoalveolar lavage fluid. *Am Rev Respir Dis* 1993; 148: 1313–1317.
- 133** Musher B, Fredricks D, Leisenring W, Balajee A, Smith C, Marr KA. *Aspergillus* galactomannan enzyme immunoassay and quantitative PCR for diagnosis of invasive aspergillosis with bronchoalveolar lavage fluid. *J Clin Microbiol* 2004; 42: 5517–5522.
- 134** Hayette MP, Vaira D, Susin F, *et al.* Detection of *Aspergillus* species DNA by PCR in bronchoalveolar lavage fluid. *J Clin Microbiol* 2001; 39: 2338–2340.
- 135** Albelda SM, Talbot GH, Gerson SL, Miller WT, Cassileth PA. Role of fiberoptic bronchoscopy in the diagnosis of invasive pulmonary aspergillosis in patients with acute leukemia. *Am J Med* 1984; 76: 1027–1034.
- 136** Barile M, Bulpa P, Nolleaux MC, *et al.* Usefulness of flexible bronchoscopy in ICU patients suspected of invasive aspergillosis. *Proc Am Thorac Soc* 2005; 2: A456.
- 137** Denning DW. Diagnosis and management of invasive aspergillosis. *Curr Clin Top Infect Dis* 1996; 16: 277–299.
- 138** Ribaud P, Chastang C, Latge JP, *et al.* Survival and prognostic factors of invasive aspergillosis after allogeneic bone marrow transplantation. *Clin Infect Dis* 1999; 28: 322–330.

- 139** Eriksson U, Seifert B, Schaffner A. Comparison of effects of amphotericin B deoxycholate infused over 4 or 24 hours: randomised controlled trial. *BMJ* 2001; 322: 579–582.
- 140** Peleg AY, Woods ML. Continuous and 4 h infusion of amphotericin B: a comparative study involving high-risk haematology patients. *J Antimicrob Chemother* 2004; 54: 803–808.
- 141** Bowden R, Chandrasekar P, White MH, *et al.* A double-blind, randomized, controlled trial of amphotericin B colloidal dispersion *versus* amphotericin B for treatment of invasive aspergillosis in immunocompromised patients. *Clin Infect Dis* 2002; 35: 359–366.
- 142** Reichenberger F, Habicht JM, Gratwohl A, Tamm M. Diagnosis and treatment of invasive pulmonary aspergillosis in neutropenic patients. *Eur Respir J* 2002; 19: 743–755.
- 143** van't Wout JW, Novakova I, Verhagen CAH, Fibbe WE, de Pauw BE, van der Meer JWM. The efficacy of itraconazole against systemic fungal infections in neutropenic patients: a randomised comparative study with amphotericin B. *J Infect* 1991; 22: 45–52.
- 144** Denning DW, Lee JY, Hostetler JS, *et al.* NIAID Mycoses Study Group Multicenter Trial of oral itraconazole therapy for invasive aspergillosis. *Am J Med* 1994; 97: 135–144.
- 145** Caillot D, Bassaris H, McGeer A, *et al.* Intravenous itraconazole followed by oral itraconazole in the treatment of invasive pulmonary aspergillosis in patients with hematologic malignancies, chronic granulomatous disease, or AIDS. *Clin Infect Dis* 2001; 33: e83–e90.
- 146** Ahmad S, Singer S, Leissa B. Congestive heart failure associated with itraconazole. *Lancet* 2001; 357: 1766–1767.
- 147** Baden LR, Katz JT, Fishman JA, *et al.* Salvage therapy with voriconazole for invasive fungal infections in patients failing or intolerant to standard antifungal therapy. *Transplantation* 2003; 76: 1632–1637.
- 148** Mattei D, Mordini N, Lo Nigro C, *et al.* Voriconazole in the management of invasive aspergillosis in two patients with acute myeloid leukemia undergoing stem cell transplantation. *Bone Marrow Transplant* 2002; 30: 967–970.
- 149** Denning DW, Ribaud P, Milpied N, *et al.* Efficacy and safety of voriconazole in the treatment of acute invasive aspergillosis. *Clin Infect Dis* 2002; 34: 563–571.
- 150** Herbrecht R, Denning DW, Patterson TF, *et al.* Voriconazole *versus* amphotericin B for primary therapy of invasive aspergillosis. *N Engl J Med* 2002; 347: 408–415.
- 151** Hoffman HL, Rathbun RC. Review of the safety and efficacy of voriconazole. *Expert Opin Investig Drugs* 2002; 11: 409–429.
- 152** Herbrecht R. Voriconazole: therapeutic review of a new azole antifungal. *Expert Rev Anti-infect Ther* 2004; 2: 485–497.
- 153** Perfect JR, Marr KA, Walsh TJ, *et al.* Voriconazole treatment for less-common, emerging, or refractory fungal infections. *Clin Infect Dis* 2003; 36: 1122–1131.
- 154** Johnson LB, Kauffman CA. Voriconazole: a new triazole antifungal agent. *Clin Infect Dis* 2003; 36: 630–637.
- 155** De Pauw B, Donnelly JP. Prophylaxis and aspergillosis – has the principle been proven? *N Engl J Med* 2007; 356: 409–411.
- 156** Ullmann A, Lipton J, Vesole D, *et al.* Posaconazole or fluconazole for prophylaxis in severe graft-*versus*-host disease. *N Engl J Med* 2007; 356: 335–347.
- 157** Cornely O, Maertens J, Winston D, *et al.* Posaconazole *vs.* fluconazole or itraconazole prophylaxis in patients with neutropenia. *N Engl J Med* 2007; 356: 348–359.
- 158** Groll AYH, Walsh TJ. Caspofungin: pharmacology, safety and therapeutic potential in superficial and invasive fungal infections. *Expert Opin Investig Drugs* 2001; 10: 1545–1558.
- 159** Maertens J, Raad I, Petrikos G, *et al.* Efficacy and safety of caspofungin for treatment of invasive aspergillosis in patients refractory to or intolerant of conventional antifungal therapy. *Clin Infect Dis* 2004; 39: 1563–1571.
- 160** Walsh TJ, Teppler H, Donowitz GR, *et al.* Caspofungin *versus* liposomal amphotericin B for empirical antifungal therapy in patients with persistent fever and neutropenia. *N Engl J Med* 2004; 351: 1391–1402.
- 161** Sable CA, Nguyen BYT, Chodakewitz JA, DiNubile MJ. Safety and tolerability of caspofungin acetate in the treatment of fungal infections. *Transpl Infect Dis* 2002; 4: 25–30.
- 162** Candoni A, Mestroni R, Damiani D, *et al.* Caspofungin as first line therapy of pulmonary invasive fungal infections in 32 immunocompromised patients with hematologic malignancies. *Eur J Haematol* 2005; 75: 227–233.
- 163** Perea S, Gonzalez G, Fothergill AW, Kirkpatrick WR, Rinaldi MG, Patterson TF. *In vitro* interaction of caspofungin acetate with voriconazole against clinical isolates of *Aspergillus* spp. *Antimicrob Agents Chemother* 2002; 46: 3039–3041.
- 164** Kirkpatrick WR, Perea S, Coco BJ, Patterson TF. Efficacy of caspofungin alone and in combination with Voriconazole in a guinea pig model of invasive aspergillosis. *Antimicrob Agents Chemother* 2002; 46: 2564–2568.
- 165** Petraitis V, Petraitiene R, Sarafandi AA, *et al.* Combination therapy in treatment of experimental pulmonary aspergillosis: synergistic interaction between antifungal triazole and an echinocandin. *J Infect Dis* 2003; 187: 1834–1843.
- 166** Rubin MA, Carroll KC, Cahill BC. Caspofungin in combination with itraconazole for the treatment of invasive aspergillosis in humans. *Clin Infect Dis* 2002; 34: 1160–1161.
- 167** Marr KA, Boeckh M, Carter RA, Kim HW, Corey L. Combination antifungal therapy for invasive aspergillosis. *Clin Infect Dis* 2004; 39: 797–802.
- 168** Schuster F, Moelter C, Schmid I, *et al.* Successful antifungal combination therapy with voriconazole and caspofungin. *Pediatr Blood Cancer* 2005; 44: 682–685.
- 169** Ehrmann S, Bastides F, Gissot V, *et al.* Cerebral aspergillosis in the critically ill: two cases of successful medical treatment. *Intensive Care Med* 2005; 31: 738–742.
- 170** Nivoix Y, Zamfir A, Lutun P, *et al.* Combination of caspofungin and an azole or an amphotericin B formulation in invasive fungal infections. *J Infect* 2006; 52: 67–74.
- 171** Singh N, Limaye A, Forrest G, *et al.* Combination of voriconazole and caspofungin as primary therapy for

- invasive aspergillosis in solid organ transplant recipients: a prospective, multicenter, observational study. *Transplantation* 2006; 81: 320–326.
- 172** Salerno CT, Ouyang DW, Pederson TS, *et al.* Surgical therapy for pulmonary aspergillosis in immunocompromised patients. *Ann Thorac Surg* 1998; 65: 1415–1419.
- 173** Reichenberger F, Habicht J, Kaim A, *et al.* Lung resection for invasive pulmonary aspergillosis in neutropenic patients with hematologic diseases. *Am J Respir Crit Care Med* 1998; 158: 885–890.
- 174** Bernard A, Caillot D, Couaillier JF, Casasnovas O, Guy H, Favre JP. Surgical management of invasive pulmonary aspergillosis in neutropenic patients. *Ann Thorac Surg* 1997; 64: 1441–1447.
- 175** Yeghen T, Kibbler CC, Prentice HG, *et al.* Management of invasive pulmonary aspergillosis in hematology patients: a review of 87 consecutive cases at a single institution. *Clin Infect Dis* 2000; 31: 859–868.
- 176** Robinson LA, Reed EC, Galbraith TA, Alonso A, Moulton AL, Fleming WH. Pulmonary resection for invasive *Aspergillus* infections in immunocompromised patients. *J Thorac Cardiovasc Surg* 1995; 109: 1182–1197.
- 177** Young VK, Maghur HA, Luke DA, McGovern EM. Operation for cavitating invasive pulmonary aspergillosis in immunocompromised patients. *Ann Thorac Surg* 1992; 53: 621–624.
- 178** Massard G, Lioure B, Wihlm JM, Morand G. Resection of mycotic lung sequestra after invasive aspergillosis. *Ann Thorac Surg* 1993; 55: 563–564.
- 179** Pidhorecky I, Urschel J, Anderson T. Resection of invasive pulmonary aspergillosis in immunocompromised patients. *Ann Surg Oncol* 2000; 7: 312–317.
- 180** Baron O, Guillaumé B, Moreau P, *et al.* Aggressive surgical management in localized pulmonary mycotic and nonmycotic infections for neutropenic patients with acute leukemia: report of eighteen cases. *J Thorac Cardiovasc Surg* 1998; 115: 63–69.
- 181** Matt P, Bernet F, Habicht J, *et al.* Predicting outcome after lung resection for invasive pulmonary aspergillosis in patients with neutropenia. *Chest* 2004; 126: 1783–1788.
- 182** Habicht JM, Passweg J, Kuhne T, Leibundgut K, Zerkowski HR. Successful local excision and long-term survival for invasive pulmonary aspergillosis during neutropenia after bone marrow transplantation. *J Thorac Cardiovasc Surg* 2000; 119: 1286–1287.
- 183** Roilides E, Blake C, Holmes A, Pizzo PA, Walsh TJ. Granulocyte-macrophage colony-stimulating factor and interferon- γ prevent dexamethasone-induced immunosuppression of antifungal monocyte activity against *Aspergillus fumigatus* hyphae. *J Med Vet Mycol* 1996; 34: 63–69.
- 184** Bernhisel-Broadbent J, Camargo EE, Jaffe HS, Lederman HM. Recombinant human interferon- γ as adjunct therapy for *Aspergillus* infection in a patient with chronic granulomatous disease. *J Infect Dis* 1991; 163: 908–911.
- 185** Boots RJ, Paterson DL, Allworth AM, Faoagali JL. Successful treatment of post-influenza pseudomembranous necrotising bronchial aspergillosis with liposomal amphotericin, inhaled amphotericin B, gamma interferon and GM-CSF. *Thorax* 1999; 54: 1047–1049.
- 186** Garcia-Covarrubias L, Barratt DM, Bartlett R, Metzinger S, Van Meter K. Invasive aspergillosis treated with adjunctive hyperbaric oxygenation: a retrospective clinical series at a single institution. *South Med J* 2002; 95: 450–456.
- 187** Veltri A, Anselmetti GC, Bartoli G, *et al.* Percutaneous treatment with amphotericin B of mycotic lung lesions from invasive aspergillosis: results in 10 immunocompromised patients. *Eur Radiol* 2000; 10: 1939–1944.
- 188** Ito JI, Lyons JM. Vaccination of corticosteroid immunosuppressed mice against invasive pulmonary aspergillosis. *J Infect Dis* 2002; 186: 869–871.
- 189** Segal BH, Walsh TJ. Current approaches to diagnosis and treatment of invasive aspergillosis. *Am J Respir Crit Care Med* 2006; 173: 707–717.
- 190** Patterson JE, Peters J, Calhoun JH, *et al.* Investigation and control of aspergillosis and other filamentous fungal infections in solid organ transplant recipients. *Transpl Infect Dis* 2000; 2: 22–28.
- 191** Raad I, Hanna H, Osting C, *et al.* Masking of neutropenic patients on transport from hospital rooms is associated with a decrease in nosocomial aspergillosis during construction. *Infect Control Hosp Epidemiol* 2002; 23: 41–43.
- 192** Oren I, Haddad N, Finkelstein R, Rowe JM. Invasive pulmonary aspergillosis in neutropenic patients during hospital construction: before and after chemoprophylaxis and institution of HEPA filters. *Am J Hematol* 2001; 66: 257–262.
- 193** Warris A, Verweij PE. Clinical implications of environmental sources for *Aspergillus*. *Med Mycol* 2005; 43: Suppl. 1, S59–S65.
- 194** Woodcock A, Steel N, Moore C, Howard S, Custovic A, Denning DW. Fungal contamination of bedding. *Allergy* 2006; 61: 140–142.