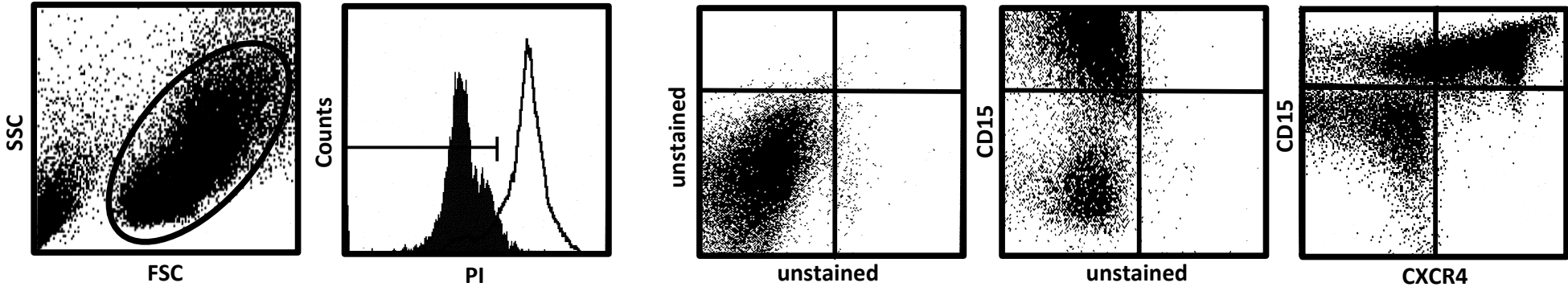
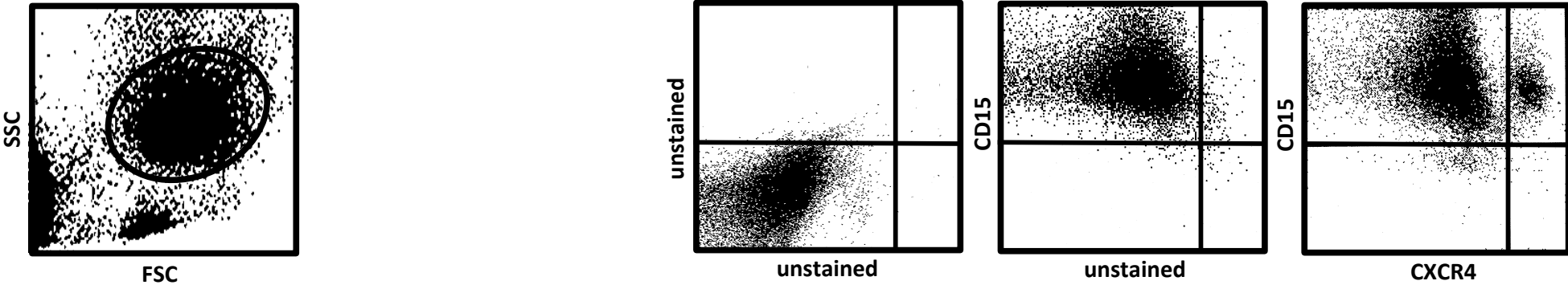


Supplementary Figure 1

A. Sputum



B. Blood



Supplementary Figure 1. FACS gating

CXCR4-expressing granulocytes were analyzed in (A) sputum or (B) peripheral blood. In sputum, first granulocytes were gated based on (i) FSC/SSC characteristics, (ii) viability (only propidium iodide (PI)-negative cells were included; The black histogram shows PI-negative/viable sputum cells, the white histogram PI-positive/dead sputum cells) and (iii) CD15/CXCR4 co-expression. Unstained controls and samples without CXCR4 stainings (FMO-controls) are shown. In peripheral blood, granulocytes were gated based on (i) FSC/SSC characteristics and (ii) CD15/CXCR4 co-expression. Unstained controls and samples without CXCR4 stainings (FMO-controls) are shown. Note: different PMT voltage settings were used for sputum and blood sample acquisition, respectively. Representative plots from a CF airway fluid (sputum) and a CF blood sample are depicted.